




# **The Insert Company (UK) Limited**

Specialists in Threaded Inserts for Wood, Plastic and Metal

Catalogue



**The Insert Company (UK) Limited** is based in the West Midlands and has been established since 2003.

We can supply a huge range of zinc alloy, brass, steel and stainless steel threaded inserts, fastenings and connectors suitable for all applications in wood, metal and plastic, including furniture assembly and the manufacture of moulded plastic components.

With our extensive experience within the fastenings industry and knowledge of manufacturers and suppliers, we can find any part at a competitive price.

We can also have parts made to your specifications for your application.

All of our inserts are manufactured from the highest quality materials and conform to all industry standards.

## Contact Details

**tel:** +44(0)121 4397329 | **fax:** +44(0)121 4397346 | **email:** [sales@theinsertcompany.com](mailto:sales@theinsertcompany.com) | **web:** [www.theinsertcompany.com](http://www.theinsertcompany.com)

### Accounts:

Almond Cottage  
Cleeve Prior  
Evesham  
Worcestershire  
WR11 8LD  
United Kingdom

### Distribution:

Unit 4  
Alma Industrial Estate  
Stafford Road  
Wednesbury  
WS10 8SX  
United Kingdom

**VAT Reg Number:** 842 0248 54  
**Company Reg Number:** 6086777



## Zinc Alloy Inserts

for applications in wood, chipboard and composites



Headed Hex Drive  
p5



Unheaded Hex Drive  
p6



Blind Knock-in  
p7



Headed Knock-in  
p8



Unheaded Knock-in  
p9

## Steel Inserts

for applications wood, chipboard, composites and metal



Headed Hex Drive  
p10



Unheaded Hex Drive  
p11



Slot-Drive  
p12



Blind Hex Drive  
p13



Self Threading  
p14



Tee Nut  
p15



Steel Knock-in  
p16



Screw Anchor  
p17



Rivet Bush  
p18

## Brass Inserts

for plastics and light loading applications in wood



Multi Headed  
p19



Multi Unheaded  
p20



Multi Micro  
p21



Ultra Inserts  
p22



NS Ultra Inserts  
p23



Studded Ultra  
p24



Press-in Inserts  
p25

## Brass Inserts

for applications in  
plastics and light  
loading applications  
in wood (continued)



Studded Press-in  
p26



Vaned Expansion  
p27



Knurled Expansion  
p28



Self Lock Expansion  
p29



Mould-in Insert  
p33



Unheaded Screw-in  
p31



Self Threading  
p32



Headed Screw-in  
p30

## Brass Inserts

for applications in  
wood and  
composites



Headed Hex Drive  
p34



Unheaded Hex-Drive  
p35



Slot-Drive  
p36



Brass Knock-in  
p37



Barbed Expansion  
p38



Spreading Insert  
p39



Spreading Dowel  
p40

## Furniture Connectors

for applications in  
furniture and timber  
assembly



Flathead Bolts  
p41



Mushroomhead Bolts  
p42



Brass Bolts  
p43



Countersunk Bolts  
p44



Flathead Caps(Closed)  
p45

# Furniture Connectors

for applications in  
furniture and timber  
assembly (continued)



Flathead Caps(Open)  
p46



Mushroom Caps(Closed)  
p47



Mushroom Caps(Open)  
p48



Countersunk Caps  
p49



Cross Dowels  
p54



Connector Screws  
p55



Confirmat Screws  
p56



Wood to Metal Dowels  
p57



Steel Studding  
p58

## Zinc Alloy Threaded Inserts

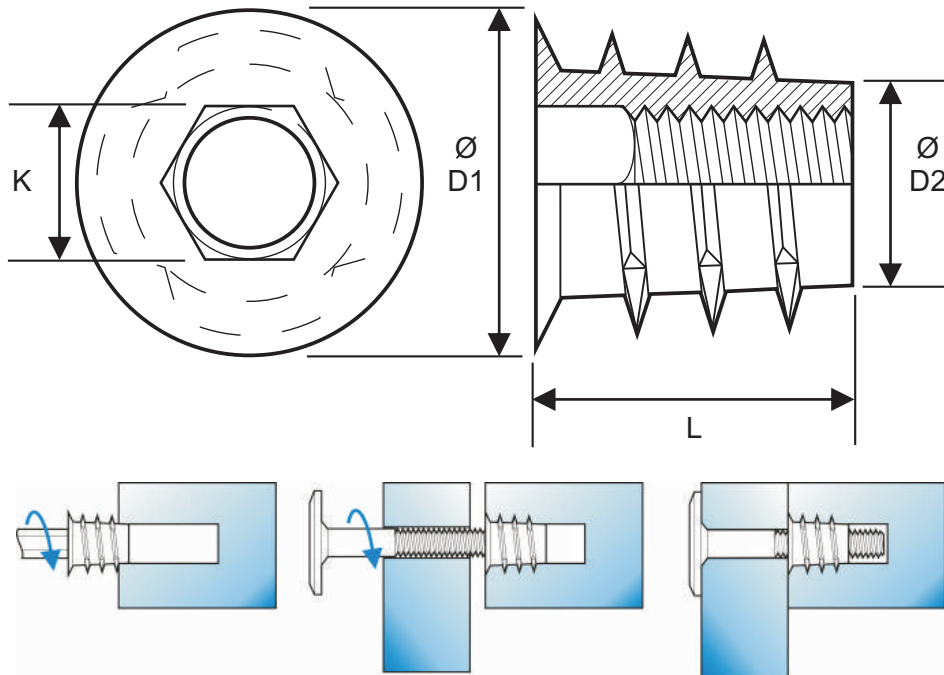
Threaded inserts made from high quality zinc alloy and designed to provide a permanent thread in wood, chipboard and composite materials.

### Headed Hex-Drive/Type D

Screw in threaded insert with sealing flange to limit insertion depth and tidy the pilot hole.

The unique self tapping external thread design provides excellent resistance to torsion and vibration pull out.

Finished with an industry standard corrosion resistant coating.



Thread Size	Available Lengths (L)	ØD1	ØD2	K	Pilot Hole
M4	10 / 20	8.5	5.5	4	5.6 – 6.0
M5	10 / 13 / 20	11.5	7.0	5	7.5 – 8.7
M6	10 / 13 / 16 / 20 / 25	12.5	8.0	6	8.7 – 9.5
M8	13 / 18 / 20 / 25	14.5	9.5	8	11.1 – 12.7
M10	13 / 25	16.0	11.5	10	12.7 – 13.1

All dimensions in mm.

Pilot hole dimensions for reference purposes only



## Zinc Alloy Threaded Inserts

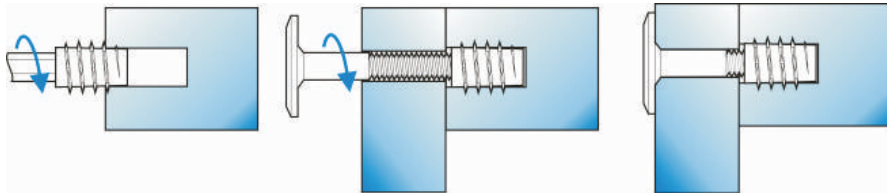
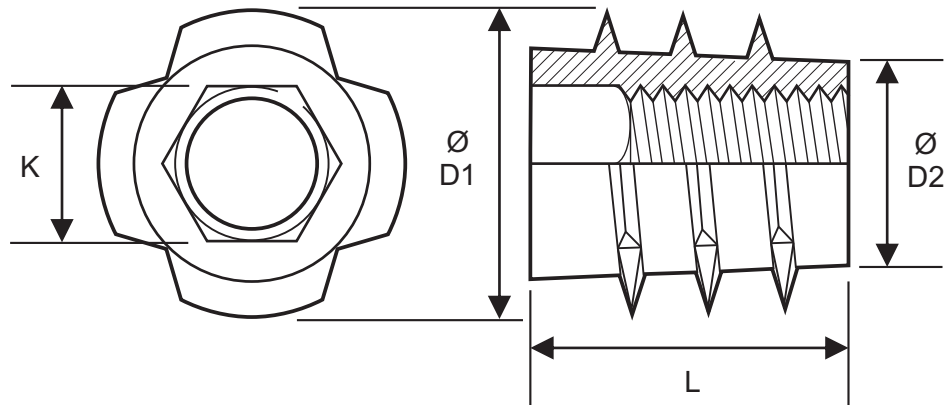
Threaded inserts made from high quality zinc alloy and designed to provide a permanent thread in wood, chipboard and composite materials.

## Unheaded Hex-Drive/Type E

Screw in threaded insert without sealing flange to allow bottoming out.

The unique self tapping external thread design provides excellent resistance to torsion and vibration pull out.

Finished with an industry standard corrosion resistant coating.



Thread Size	Available Lengths (L)	ØD1	ØD2	K	Pilot Hole
M4	10	7.3	5.5	4	5.6 – 6.0
M5	13	10.9	6.7	5	7.5 – 7.9
M6	10 / 13 / 20	11.7	7.5	6	8.7 – 9.1
M8	13 / 20 / 25	14.3	9.5	8	11.1 – 11.5

All dimensions in mm.

Pilot hole dimensions for reference purposes only

## Zinc Alloy Threaded Inserts

Threaded inserts made from high quality zinc alloy and designed to provide a permanent thread in wood, chipboard and composite materials.

### Blind Knock-in/Type I

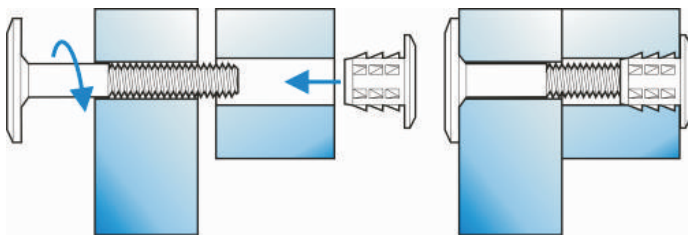
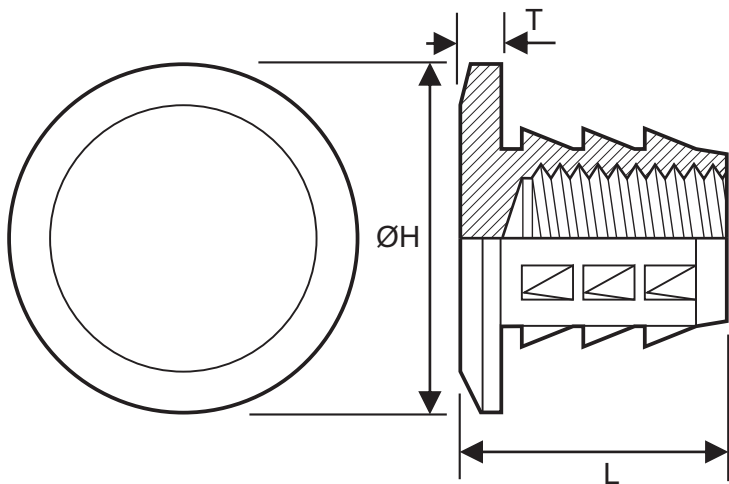
Blind knock in threaded insert with decorative head.

The external barbs provide excellent resistance to torsion and vibration pull out.

Available yellow zinc plated, nickel plated and in antique bronze.



Nickel Plate



Thread Size	Available Lengths (L)	ØH	T	Pilot Hole
M4	12.5	11.0	2.5	5.6 – 6.0
M6	13.5 / 20.0	17.0	2.0	7.0 – 8.0
M8	17.5	17.0	2.0	10.0 – 11.5

All dimensions in mm.

Pilot hole dimensions for reference purposes only



## Zinc Alloy Threaded Inserts

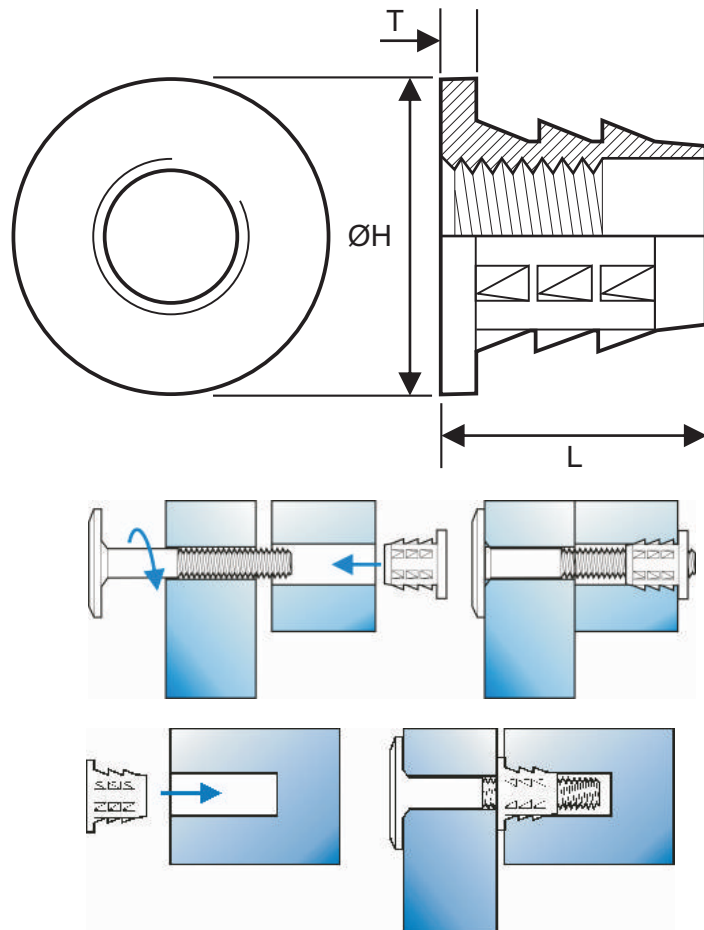
Threaded inserts made from high quality zinc alloy and designed to provide a permanent thread in wood, chipboard and composite materials.

### Headed Knock-in/Type B

Knock in threaded insert with external barbs that provide excellent resistance to torsion and pull out.

With head to tidy the pilot hole and ensure level insertion.

All supplied yellow zinc plated.



Thread Size	Available Lengths (L)	ØH	T	Pilot Hole
M3	8.0	8.5	1.0	4.1 – 4.5
M4	9.5 / 11.5	10.5	1.5	5.6 – 6.0
M5	12.0 / 15.0	12.5	2.0	7.1 – 7.5
M6	10.5	16.0	2.0	8.6 – 9.0
M6	12.5 / 15.5	14.5	2.5	8.6 – 9.0
M8	15.5	19.0	1.5	9.6 – 10.0
M8	16.0	14.0	0.3	9.6 – 10.0
M8	20.5	25.0	0.5	9.6 – 10.0
M8	23.0	19.0	0.5	9.6 – 10.0

All dimensions in mm.

Pilot hole dimensions for reference purposes only

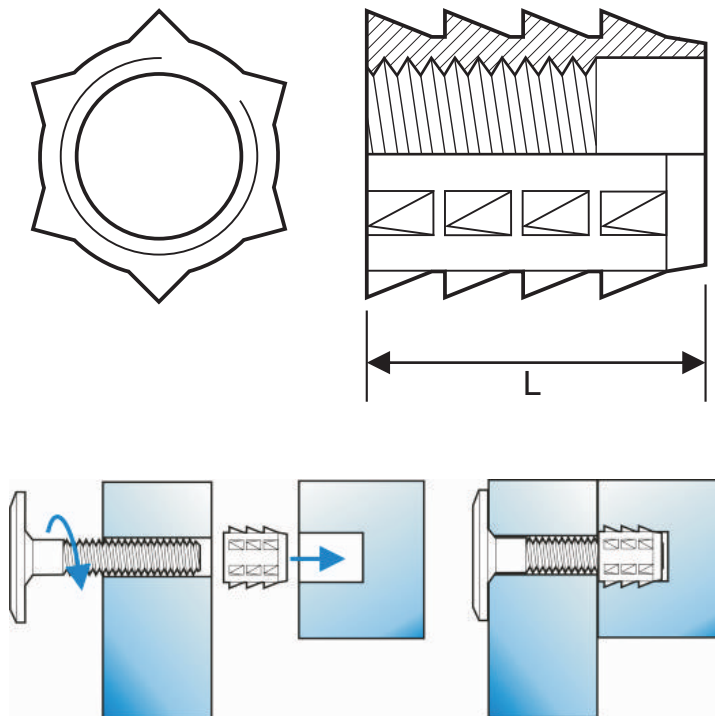
## Zinc Alloy Threaded Inserts

Threaded inserts made from high quality zinc alloy and designed to provide a permanent thread in wood, chipboard and composite materials.

### Unheaded Knock-in/Type A

Knock in threaded insert with external barbs that provide excellent resistance to torsion and pull out.

All supplied yellow zinc plated as standard.



Thread Size	Available Lengths (L)	Pilot Hole
M4	10.0	5.6 – 6.0
M5	13.0	7.1 – 7.5
M6	10.0 / 13.0	8.6 – 9.0

All dimensions in mm.

Pilot hole dimensions for reference purposes only

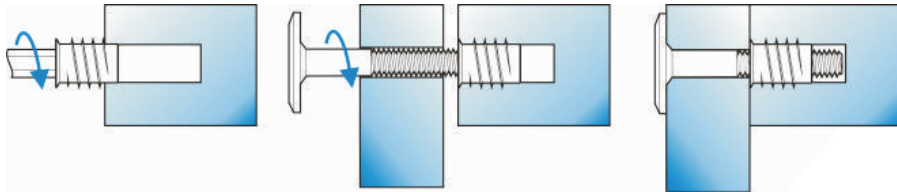
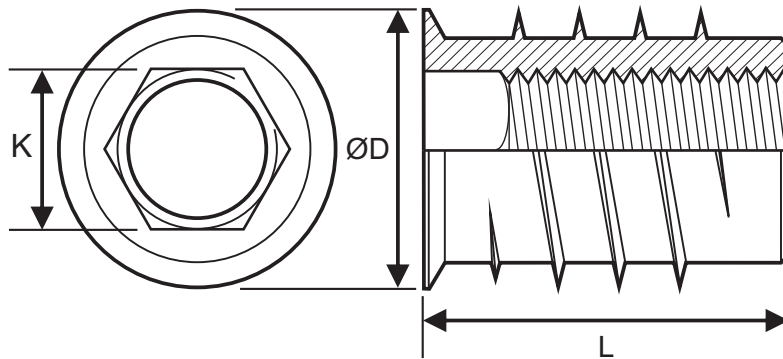
## Steel Threaded Inserts

Threaded inserts made from high quality steel and stainless steel.

### Headed Hex-Drive

Screw-in threaded insert with blade-like self tapping external thread designed to reduce installation forces into harder materials.

With sealing flange to limit insertion depth and tidy the pilot hole.



\*Available in stainless steel grade 1.4305.

\*\*Size only available in stainless steel grade 1.4305.

All dimensions in mm.

Pilot hole dimensions for reference purposes only.

Thread Size	Available Lengths (L)	ØD	K	Pilot Hole
M4	8 / 10* / 12	8.0	4	6.6 – 7.2
M5	12* / 15	10.0	5	8.4 – 9.2
M6	12* / 15* / 18 / 20	12.0	6	10.0 – 10.8
M8	15	13.0	8	11.0 – 11.8
M8	15* / 18	14.0	8	12.0 – 12.8
M8	14 / 18* / 23	16.0	8	14.0 – 14.9
M10	20 / 25	18.5	10	16.2 – 17.2
M12	25* / 30**	22.0	12	19.5 – 20.5
M16	30	25.0	16	22.5 – 23.5

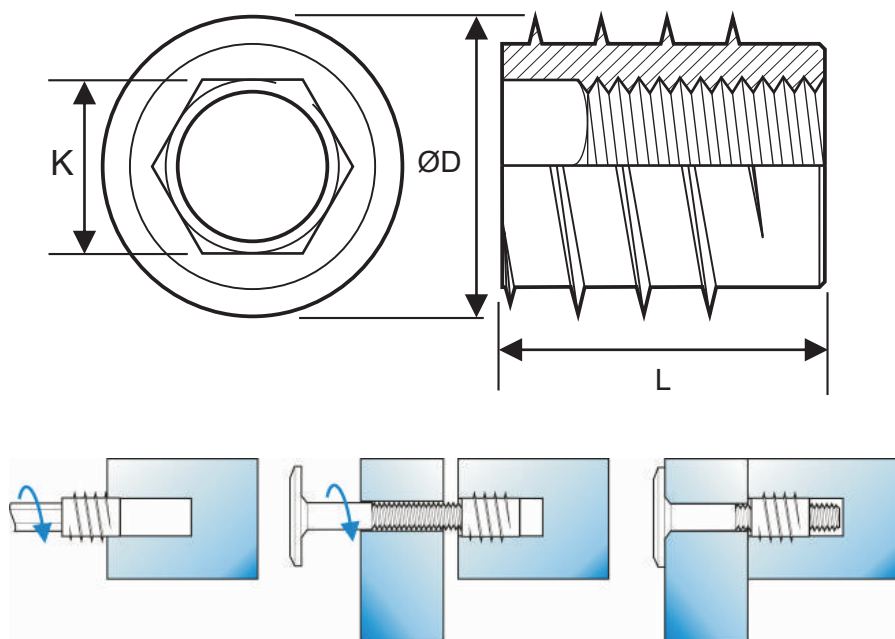
## Steel Threaded Inserts

Threaded inserts made from high quality steel and stainless steel.

## Unheaded Hex-Drive

Screw-in threaded insert with blade-like self tapping external thread designed to reduce installation forces into harder materials.

Without sealing flange to allow bottoming out.



Thread Size	Available Lengths (L)	ØD	K	Pilot Hole
M4	8* / 10 / 12	8.0	4	6.6 – 7.2
M5	8 / 10 / 12* / 14	10.0	5	8.4 – 9.2
M6	12* / 15* / 18 / 20 / 23 / 25	12.0	6	10.0 – 10.8
M8	12 / 15 / 18 / 30	14.0	8	12.0 – 12.8
M8	14 / 18* / 23 / 30	16.0	8	14.0 – 14.9
M10	15 / 20 / 25 / 30 / 40	18.5	10	16.2 – 17.2
M12	30 / 40	22.0	12	19.5 – 20.5

\*Available in stainless steel grade 1.4305.

All dimensions in mm.

Pilot hole dimensions for reference purposes only.

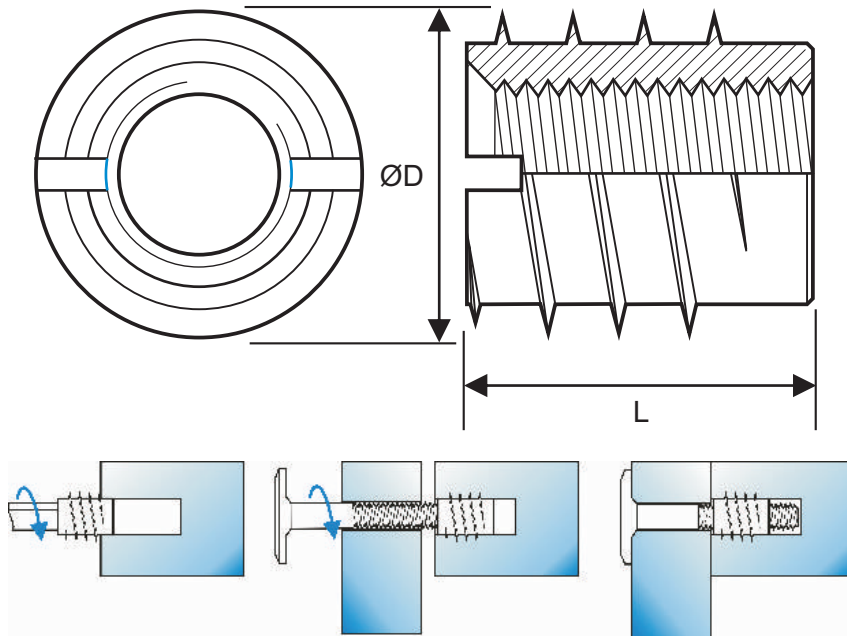
## Steel Threaded Inserts

Threaded inserts made from high quality steel and stainless steel.

## Slot-Drive

Screw-in threaded insert with blade-like self tapping external thread designed to reduce installation forces into harder materials.

Suited to automated installation.



\*Available in stainless steel grade 1.4305.

\*\*Size only available in stainless steel grade 1.4305.

All dimensions in mm.

Pilot hole dimensions for reference purposes only.

Thread Size	Available Lengths (L)	ØD	Pilot Hole
M3	6	6	4.6–5.2
M4	8* / 10 / 12	6.5	5.3–5.8
M4	6 / 8 / 10* / 12	8.0	5.7–6.6
M5	6 / 8 / 10 / 12* / 14	10.0	7.6–8.5
M6	10 / 11 / 12* / 15* / 14 / 15 / 18 / 20 / 24	12.0	9.4–10.4
M8	14 / 18 / 20 / 25	13.0	10.4–11.4
M8	12 / 14 / 15* / 18 / 20	14.0	11.4–12.4
M8	12 / 14 / 16 / 18* / 20 / 23 / 30 / 40	16.0	12.6 – 14.0
M10	18**	16.0	12.6 – 14.0
M10	12 / 15 / 20 / 25 / 30	18.5	15.1–16.5
M12	20 / 25** / 30	22.0	18.3–19.8
M14	25 / 30	22.0	18.3–19.8
M16	25** / 30**	25.0	21.3–22.8

## Steel Threaded Inserts

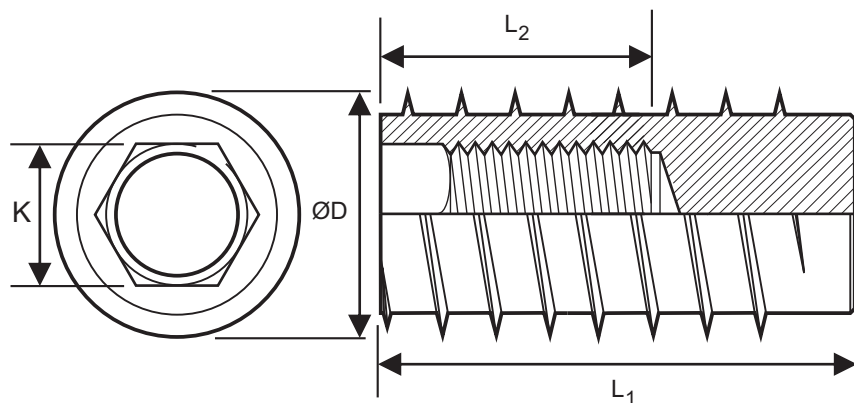
Threaded inserts made from high quality steel and stainless steel.

### Blind Hex-Drive

Screw-in threaded insert with blade like self tapping external thread designed to reduce installation forces into harder materials.

Blind ended, and with increased length for heavy duty applications.  
Without sealing flange to allow bottoming out.

Available in plain steel and zinc plated steel.



Thread Size	Available Lengths (L)	L2	ØD	K	Pilot Hole
M6	25	18	12.0	6	10.0 – 10.8
M6	30 / 40	20	12.0	6	10.0 – 10.8
M8	30 / 40 / 50 / 60 / 70	22	16.0	8	14.0 – 14.9
M10	30 / 40 / 50 / 60 / 70	21	18.5	10	16.2 – 17.2
M12	60 / 80 / 100	25	22.0	12	19.5 – 20.5
M16	60 / 80 / 100	25	25.0	14	22.5 – 23.5

All dimensions in mm.

Pilot hole dimensions for reference purposes only.



## Steel Threaded Inserts

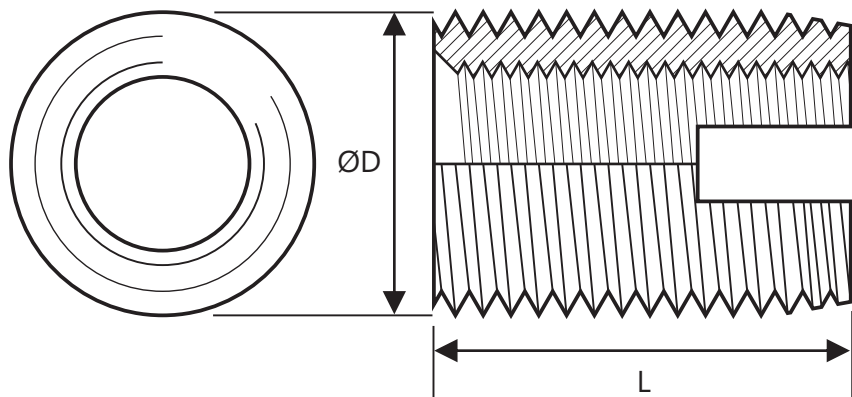
Threaded inserts made from high quality steel and stainless steel.

### Self Threading

Plain, case hardened and stainless steel self tapping threaded inserts with both internal and external thread, a wide cutting slot and tapered lead for tapping into harder materials including metals and plastics.

Very high resistance to vibration and pull out.

Available in zinc plate, yellow zinc plate, RoSH compliant blue zinc plate and stainless steel grades 1.4104 and 1.4305.



\*Available in stainless steel grade 1.4305.

\*\*Available in stainless steel grade 1.4104 and 1.4305.

\*\*\*Size only available in stainless steel grade 1.4305 and yellow zinc plated case hardened steel.

All dimensions in mm.

Pilot hole dimensions for reference purposes only.

Internal Thread	Available Lengths (L)	External Thread (ØD)	Pilot Hole
M3	6*	M5 x 0.5	4.6–4.8
M4	8*	M6.5 x 0.75	5.8–6.2
M5	8 / 10**	M8 x 1.0	7.1–7.6
M6	8 / 10 / 12*	M9 x 1.0	8.1–8.6
M6	14**	M10 x 1.5	8.6–9.4
M8	12 / 15**	M12 x 1.5	10.6–11.4
M10	15 / 18*	M14 x 1.5	12.6–13.4
M10	18	M16 x 1.5	14.6 – 15.4
M12	22*	M16 x 1.5	14.6 – 15.4
M14	24***	M18 x 1.5	16.6–17.4
M16	22*	M20 x 1.5	18.6–19.4
M20	27*	M26 x 1.5	24.8–25.2
M24	30	M30 x 1.5	28.8–29.2

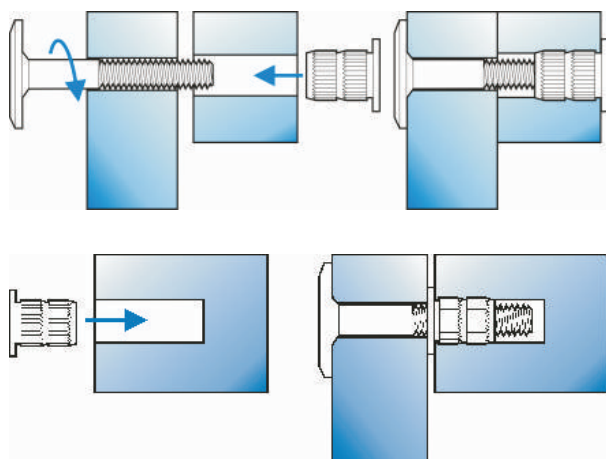
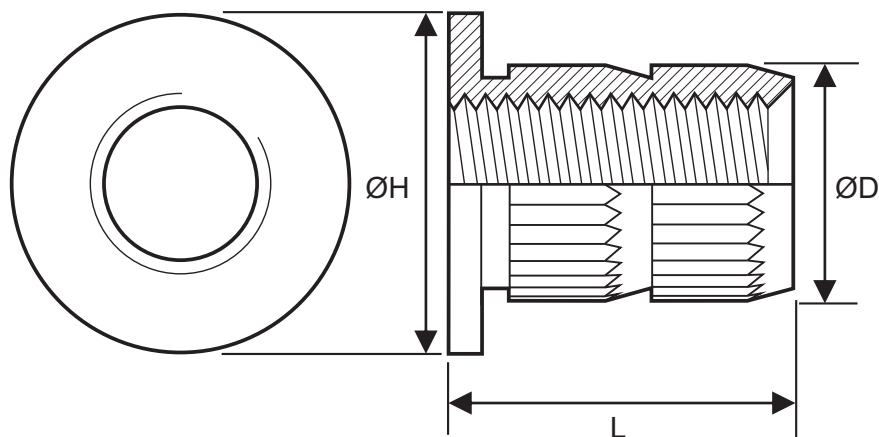
## Steel Threaded Inserts

Threaded inserts made from high quality steel and stainless steel.

### Knock-in

Knock-in threaded insert with external knurl and groove design to provide excellent resistance to torsion and pull out.

Headed to tidy the pilot hole and ensure level installation.



Thread Size	Available Lengths (L)	ØH	ØD
M3	8.0	8.0	5.5
M4	5.5 / 8.0*	8.0	5.5
M5	6.6 / 10.0*	10.0	6.5
M6	7.7 / 12.0*	12.0	8.5
M8	12.0*	15.0	10.5
M10	12.0**	18.0	12.5
M10	12.0	18.5	12.5

\*Available in stainless steel grade 1.4305.

\*\*Size only available in stainless steel grade 1.4305.

All dimensions in mm.

Pilot hole dimensions for reference purposes only.

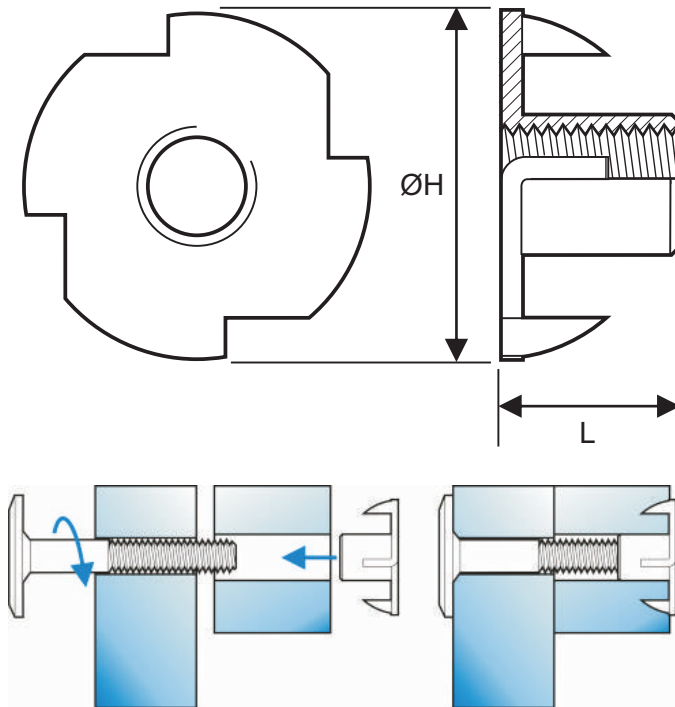
## Steel Threaded Inserts

Threaded inserts made from high quality steel and stainless steel.

### T-Nut

Knock-in threaded insert with four prongs to provide excellent resistance to torsion and pull out.

Hard wearing insert suitable for outdoor applications, garden furniture etc.



Thread Size	Available Lengths (L)	ØH
M3	5	13
M4	6 / 8*	15
M5	8* / 12	17.0
M6	6 / 9* / 12 / 14 / 18	19.0
M8	9* / 11* / 15 / 17 / 20	22.0
M10	12* / 16	25.0
M12	14.5	27.0
M16	16**	60.0
M20	16**	60.0

\*Available in stainless steel grade 1.4301.

\*\*Diameter flattened on two sides to 56mm and with two 5.5mm holes 44mm apart.

All dimensions in mm.

## Steel Threaded Inserts

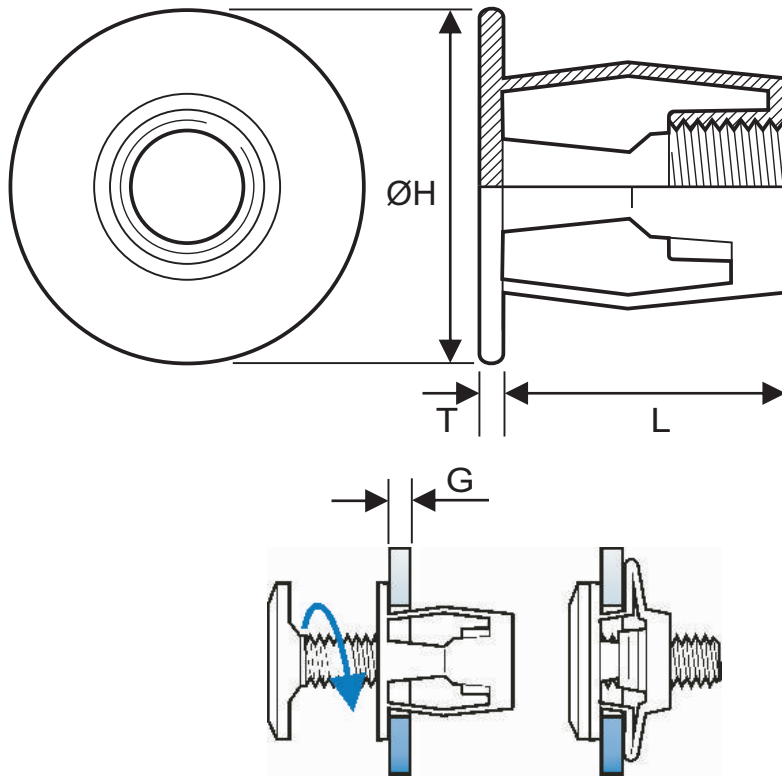
Threaded inserts made from high quality steel and stainless steel.

## Screw Anchors (Hollow Wall Anchors)

Zinc plated steel screw anchors / hollow wall anchors, for use in thin sectioned materials; sheet metal, fiberglass, plastics, composites etc. where one surface is inaccessible.

The head and collapsible legs form a load bearing surface on both sides of the material.

Available in short and long grip versions.



Thread Size	L Short /Long	ØH	T	Grip Range(G)		Pilot Hole (+0.2/-0.0)
				Short	Long	
M4	15 / 20	12.0	2.0	0.5 – 5.0	0.5 – 8.0	8.0
M5	16 / 21	13.5	2.0	0.5 – 5.0	0.5 – 8.0	10.0
M6	16 / 21	16.0	2.0	0.5 – 5.0	0.5 – 8.0	11.0

All dimensions in mm.

Pilot hole dimensions for reference purposes only.

## Steel Threaded Inserts

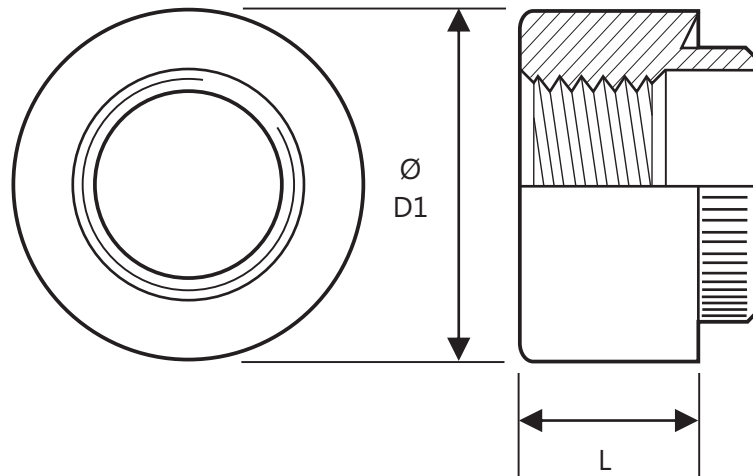
Threaded inserts made from high quality steel and stainless steel.

## Rivet Bush

Steel rivet bush with serated spigot for thin section/sheet materials.

Can be installed into punched or drilled holes manually or with an auto feed press.

Available in plain steel, stainless steel or zinc plated steel.



All dimensions in mm.  
Pilot hole dimensions for reference purposes only.

Thread Size	Length (L)	ØH	Pilot Hole
M2	2.3	8.0	6.0
M2.5	3.2	8.0	5.9
M3	3.2	8.0	5.9
M3.5	3.8	9.5	7.0
M4	3.8	9.5	7.0
M5	4.4	11.0	8.35
M6	5.7	12.5	9.6
M8	6.4	16.0	13.1
M10	7.6	19.0	15.5
M12	10.2	25.4	19.6
M14	10.2	25.4	19.5
M16	10.3	25.4	19.5

## Brass Threaded Inserts

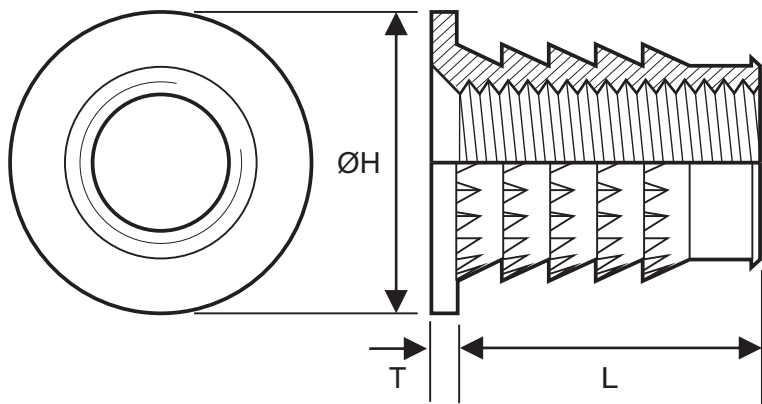
Threaded inserts made from high quality CZ121/CW614N brass to give high tensile strength and excellent resistance to corrosion.

## Multi Headed

Suitable for ultrasonic, heated and cold press-in installation into most grades of plastic.

Unique knurl and groove design gives excellent resistance to torsion and pull-out.

Available in long and short versions with reduced head diameter and double head height sizes.



All dimensions in mm.

Pilot hole dimensions for reference purposes only.

Thread Size	Available Lengths (L)	Available ØH	Available T	Pilot Hole
M1.6	2.0	3.2	0.50	2.3–2.5
M2	2.0 / 4.2	4.8	0.50	3.0–3.3
M2.5	4.1 / 5.2	5.5 / 7.1	0.75	3.7–4.0
M3	4.1 / 5.2	5.5 / 7.1	0.75 / 1.50	3.7–4.0
M3.5	4.1 / 7.0	6.4 / 7.9	0.75 / 1.50	4.6–5.0
M4	5.6 / 8.5	7.1 / 8.7	0.75 / 1.50	5.4–5.9
M5	6.6 / 10.1	7.9 / 11.1	0.90 / 1.75	6.0–6.5
M6	7.7 / 12.3	9.5 / 12.7	1.00 / 2.00	7.7–8.2
M8	10.1 / 13.8	12.7 / 14.3	1.25 / 2.50	10.2–10.6
M10	10.1	14.3	2.50	12.5–13.0



## Brass Threaded Inserts

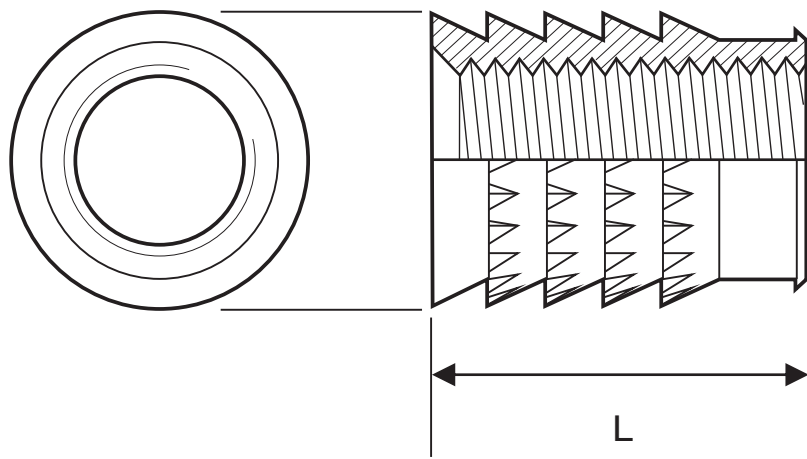
Threaded inserts made from high quality CZ121/CW614N brass to give high tensile strength and excellent resistance to corrosion.

## Multi Unheaded

Suitable for ultrasonic, heated and cold press-in installation into most grades of plastic.

Unique knurl and groove design gives excellent resistance to torsion and pull-out.

Available in long and short versions.



All dimensions in mm.  
Pilot hole dimensions for reference purposes only.

Thread Size	Available Lengths (L)	Pilot Hole
M2	3.1 / 4.2	3.0–3.3
M2.5	4.1 / 5.2	3.7–4.0
M3	4.1 / 5.2	3.7–4.0
M3.5	4.1 / 7.0	4.6–5.0
M4	5.6 / 8.5	5.4–5.9
M5	6.6 / 10.1	6.0–6.5
M6	7.7 / 12.3	7.7–8.2
M8	8.3 / 13.8	10.2–10.6
M10	10.5 / 16.1	12.5–13.0
M12	16.1	15.0–15.4

## Brass Threaded Inserts

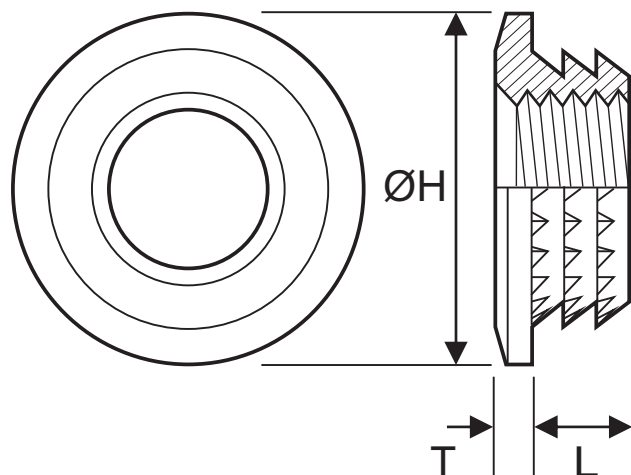
Threaded inserts made from high quality CZ121/CW614N brass to give high tensile strength and excellent resistance to corrosion.

## Multi Micro

Suitable for ultrasonic, heated and cold press-in installation into most grades of plastic.

Unique knurl and groove design gives excellent resistance to torsion and pull-out.

Designed for use in thin sectioned/sheet materials.



Thread Size	L	ØH	T	Pilot Hole
M2	1.35	4.9	0.55	3.3
M2.5	1.85	5.6	0.55	4.15
M3	1.85	6.1	0.85	4.66
M4	3.0	7.9	1.0	6.13
M5	3.0	10.0	1.4	7.7
M6	3.0	12.7	1.7	9.55
M8	4.55	14.3	1.7	11.55
M10	4.55	16.0	3.15	13.05

All dimensions in mm.

Pilot hole dimensions for reference purposes only.

## Brass Threaded Inserts

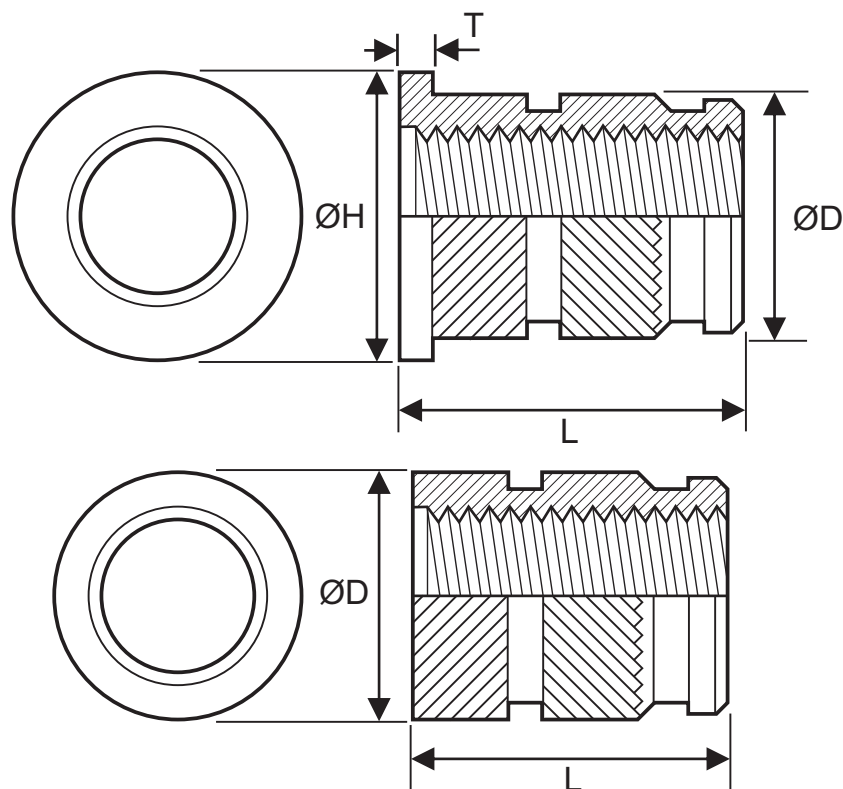
Threaded inserts made from high quality CZ121/CW614N brass to give high tensile strength and excellent resistance to corrosion.

## Ultra Inserts

Suitable for ultrasonic and heated press-in installation into thermoforming plastic. Opposing herringbone knurl design gives excellent resistance to torsion and pull-out.

Widely used in the manufacture of moulded plastic components.

Available as headed and unheaded versions.



Thread Size	L	ØH	T	ØD	Pilot Hole
M2	4.0	4.8	0.6	3.6	3.2
M2.5	5.8	5.6	0.6	4.6	4.0
M3	5.8	5.6	0.6	4.6	4.0
M3.5	7.2	6.4	0.8	5.4	4.8
M4	8.2	7.2	0.8	6.3	5.6
M5	9.5	8.0	1.0	7.0	6.4
M6	12.7	9.5	1.3	8.6	8.0
M8	12.7	11.0	1.3	10.2	9.6
M10	12.7	14.0	1.3	12.3	11.7

All dimensions in mm.  
Pilot hole dimensions for reference purposes only.

## Brass Threaded Inserts

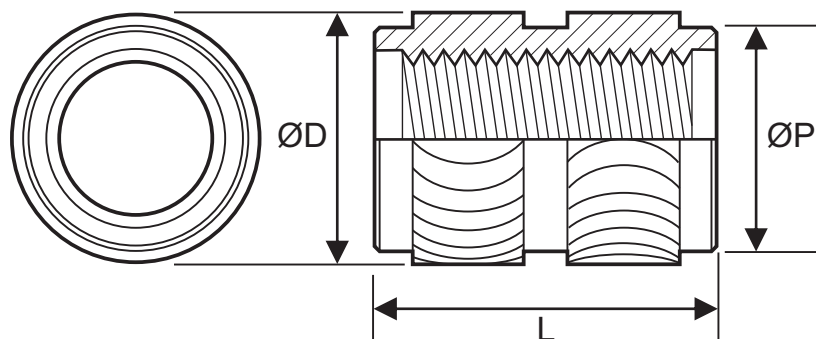
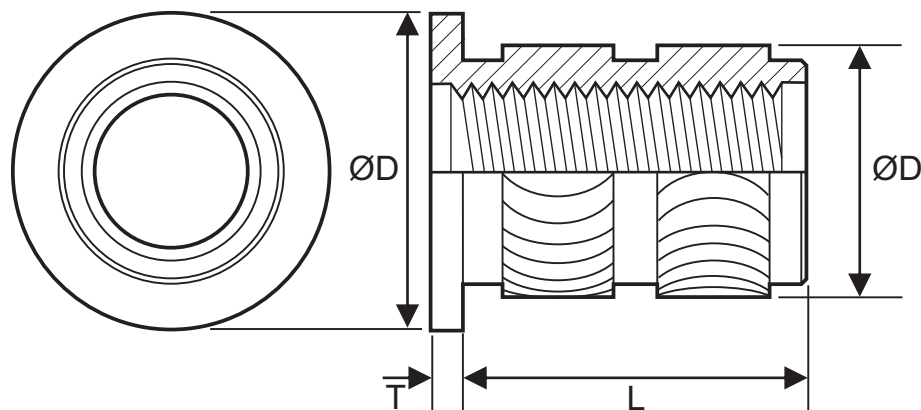
Threaded inserts made from high quality CZ121/CW614N brass to give high tensile strength and excellent resistance to corrosion.

## NS Ultra Inserts

Threaded inserts formed with a rounded crest knurl for ultrasonic or heated installation into notch sensitive plastics such as 30% glass filled polycarbonate.

Available with or without head.

The unheaded version is dual ended for easy orientation. Imperial thread sizes and studded versions also available.



Thread Size	L	ØH	T	ØD	Pilot Hole
M2	3.9	4.8	0.51	3.5	3.2
M2.5	5.8	5.5	0.58	4.4	4.0
M3	5.8	5.5	0.58	4.4	4.0
M3.5	7.1	6.4	0.74	5.2	4.8
M4	8.1	7.1	0.89	6.0	5.6
M5	9.5	8.9	1.07	6.8	6.4
M6	12.7	9.5	1.32	8.4	8.0
M8	12.7	11.1	1.32	10.0	9.6

All dimensions in mm.  
Pilot hole dimensions for reference purposes only.

## Brass Threaded Inserts

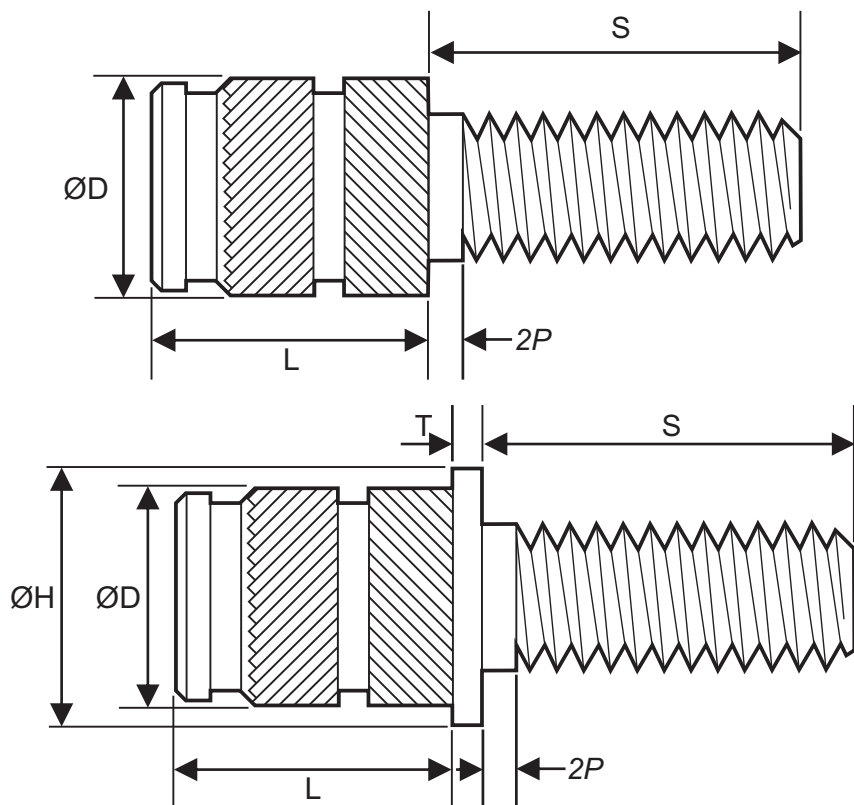
Threaded inserts made from high quality CZ121/CW614N brass to give high tensile strength and excellent resistance to corrosion.

## Studded Ultra Inserts

Suitable for ultrasonic and heated press-in installation into thermoforming plastics.

Opposing herringbone knurl design gives excellent resistance to torsion and pull-out.

Available as headed and unheaded versions, and with a stud length(S) of 6, 10, 16 or 25mm  
(actual threaded length  $S - 2 \times \text{Threaded Pitch}$ ).



Thread Size	L	ØH	T	ØD	Pilot Hole
M2	4.0	4.8	0.6	3.6	3.2
M2.5	5.8	5.6	0.6	4.6	4.0
M3	5.8	5.6	0.6	4.6	4.0
M3.5	7.2	6.4	0.8	5.4	4.8
M4	8.2	7.2	0.8	6.3	5.6
M5	9.5	8.0	1.0	7.0	6.4
M6	12.7	9.5	1.3	8.6	8.0
M8	12.7	11.0	1.3	10.2	9.6

All dimensions in mm.  
Pilot hole dimensions for reference purposes only.

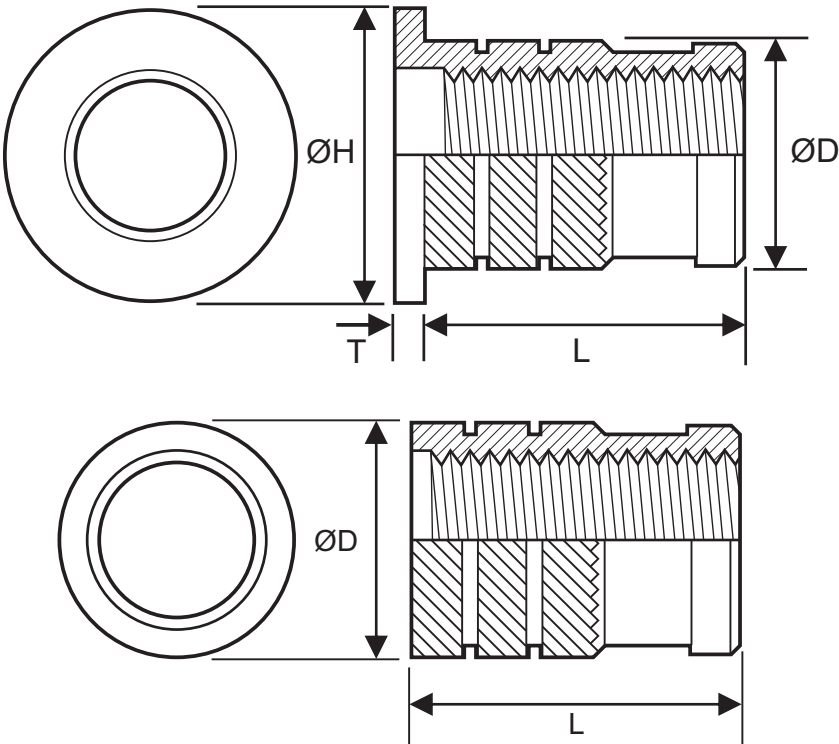
## Brass Threaded Inserts

Threaded inserts made from high quality CZ121/CW614N brass to give high tensile strength and excellent resistance to corrosion.

## Press-in Inserts

Suitable for heated and cold press-in installation into plastics.

Available as headed and unheaded versions.



Thread Size	L	ØH	T	ØD	Pilot Hole
M2	4.0	4.8	0.6	3.35	3.1
M2.5	5.3	5.6	0.6	4.2	3.8
M3	5.3	5.6	0.6	4.2	3.8
M3.5	6.3	6.4	0.8	5.0	4.6
M4	7.4	7.2	0.8	5.8	5.4
M5	8.3	8.0	1.0	6.6	6.2
M6	9.2	9.5	1.3	8.2	7.8
M8	9.2	11.0	1.3	9.7	9.3
M10	9.2	14.0	1.3	12.0	11.6

All dimensions in mm.  
Pilot hole dimensions for reference purposes only.



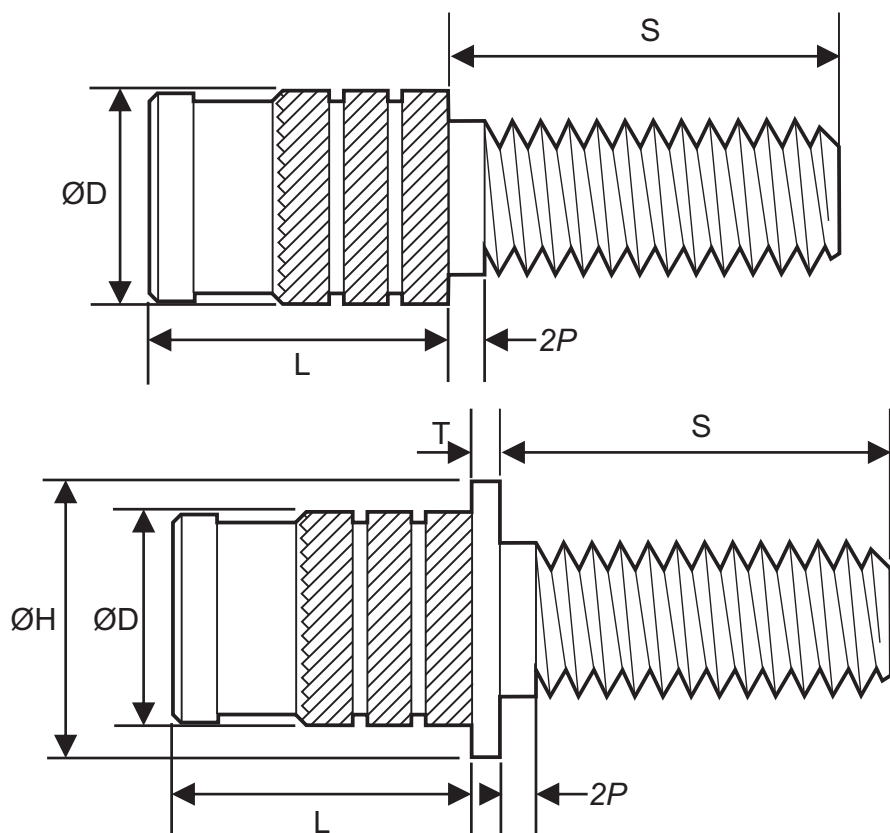
## Brass Threaded Inserts

Threaded inserts made from high quality CZ121/CW614N brass to give high tensile strength and excellent resistance to corrosion.

## Studded Press-in Inserts

Suitable for heated and cold press-in installation into plastics.

Available as headed and unheaded versions, and with a stud length(S) of 6, 10, 16 or 25mm (actual threaded length  $S - 2 \times \text{Threaded Pitch}$ ).



Thread Size	L	ØH	T	ØD	Pilot Hole
M2	4.0	4.8	0.6	3.35	3.1
M2.5	5.3	5.6	0.6	4.2	3.8
M3	5.3	5.6	0.6	4.2	3.8
M3.5	6.3	6.4	0.8	5.0	4.6
M4	7.4	7.2	0.8	5.8	5.4
M5	8.3	8.0	1.0	6.6	6.2
M6	9.2	9.5	1.3	8.2	7.8
M8	9.2	11.0	1.3	9.7	9.3

All dimensions in mm.

Pilot hole dimensions for reference purposes only.

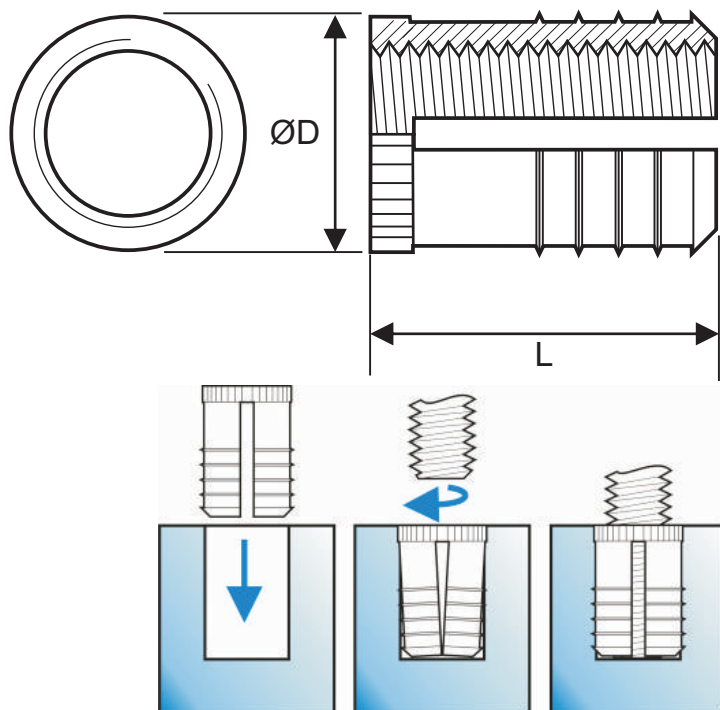
## Brass Threaded Inserts

Threaded inserts made from high quality CZ121/CW614N brass to give high tensile strength and excellent resistance to corrosion.

## Vaned Expansion Inserts

Threaded brass inserts for cold-set installation into thermo plastics.

Simple unheated installation procedure requires no special equipment.



Thread Size	L	ØD	Pilot Hole
M2	4.0	3.7	3.2
M2.5	5.8	4.5	4.0
M3	5.8	4.5	4.0
M4	8.2	6.2	5.6
M5	9.5	6.9	6.4
M6	12.7	8.5	8.0
M8	12.7	10.1	9.6

All dimensions in mm.

Pilot hole dimensions for reference purposes only.

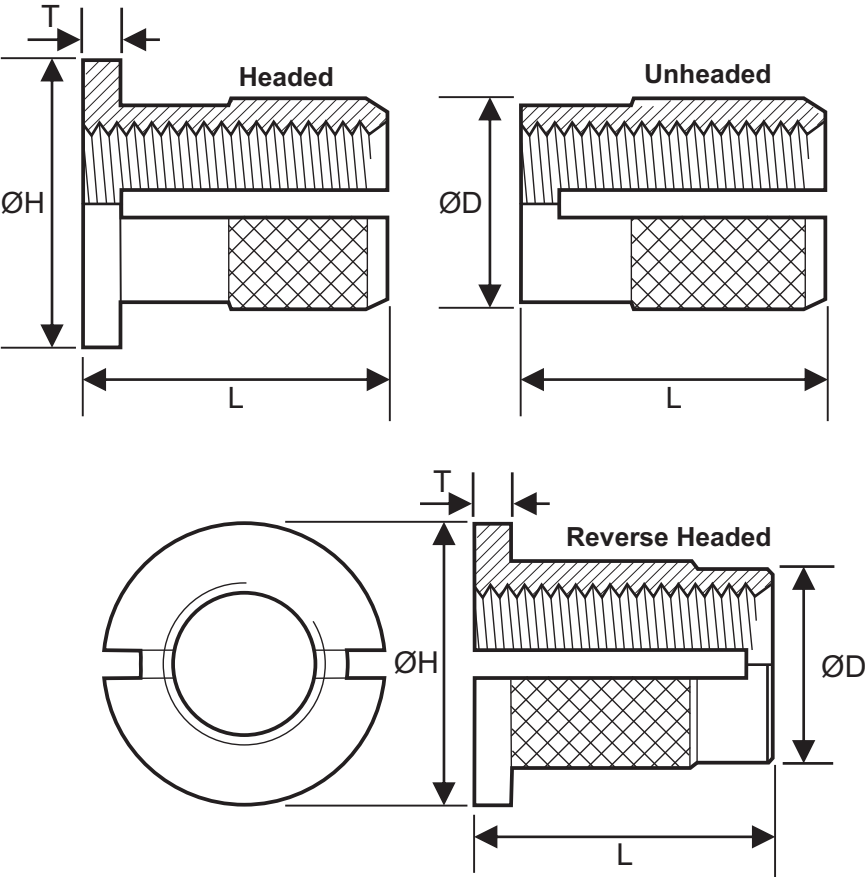
## Brass Threaded Inserts

Threaded inserts made from high quality CZ121/CW614N brass to give high tensile strength and excellent resistance to corrosion.

## Knurled Expansion Inserts

Threaded brass inserts for cold-set installation into plastics.

Available as headed, unheaded and reverse headed versions.



Thread Size	L	ØH	T	Pilot Hole ØD
M2	3.9	4.8	0.43	3.2
M2.5	4.7	5.5	0.51	4.0
M3	4.7	5.5	0.51	4.0
M3.5	6.3	6.4	0.66	4.7
M4	7.9	7.1	0.82	5.5
M5	9.4	7.9	0.99	6.3
M6	12.6	9.5	1.25	8.0
M8	12.6	11.1	1.25	9.6

All dimensions in mm.  
Pilot hole dimensions for reference purposes only.

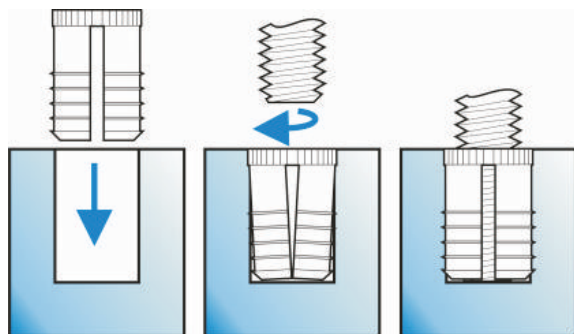
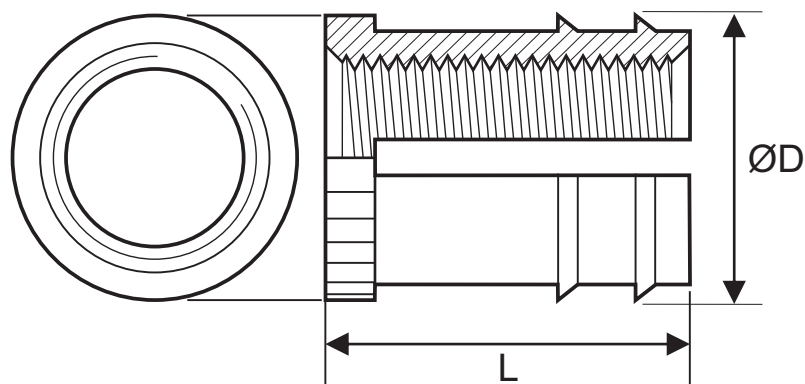
## Brass Threaded Inserts

Threaded inserts made from high quality CZ121/CW614N brass to give high tensile strength and excellent resistance to corrosion.

## Self Lock Expansion Inserts

Threaded brass inserts for cold-set installation into plastics.

Simple unheated installation procedure requires no special equipment.



Thread Size	L	ØD	Vane Count	Pilot Hole
M2.5	4.8	5.35	1	4.5–4.7
M3	4.8	5.35	1	4.5–4.7
M3.5	6.4	6.0	1	5.2–5.4
M4	8.0	6.65	2	5.8–6.0
M5	9.5	7.35	2	6.5–6.7
M6	12.7	9.05	2	8.2–8.4
M8	12.7	12.45	3	11.8–12.0

All dimensions in mm.

Pilot hole dimensions for reference purposes only.

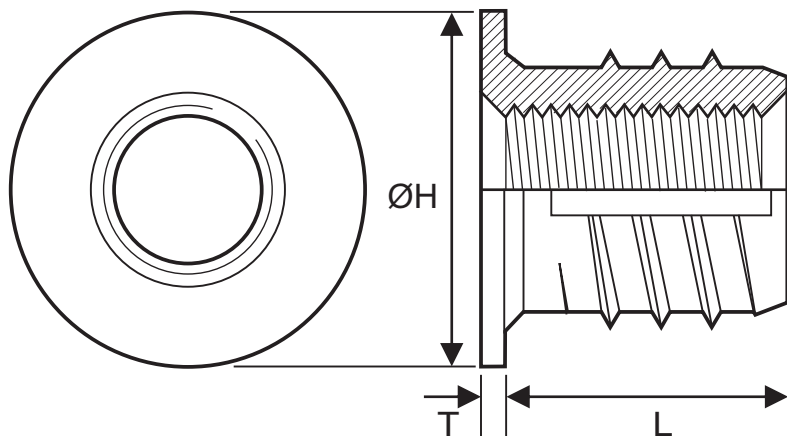
## Brass Threaded Inserts

Threaded inserts made from high quality CZ121/CW614N brass to give high tensile strength and excellent resistance to corrosion.

## Screw-in Inserts/Headed

Self tapping threaded brass inserts with three cutting flutes for cold installation into most grades of plastic and composite materials.

Reduced head sizes available.



Reduced Head

Thread Size	Available Lengths(L)	ØH	Pilot Hole
M3	6.25	4.7	4.1 – 4.4
M4	8.4	6.3	5.8 – 6.1
M5	10.0	7.5	6.9 – 7.2
M6	7.9 / 12.0	8.6	8.0 – 8.4
M8	14.0	11.1	10.1 – 10.6

Regular Head

Thread Size	Available Lengths(L)	ØH	Pilot Hole
M2.5	4.0 / 5.25	6.35	3.8 – 4.1
M3	4.0 / 5.25	7.1	4.1 – 4.4
M3.5	5.0 / 6.2	8.3	5.0 – 5.3
M4	5.6 / 7.1	8.7	5.8 – 6.1
M5	6.4 / 8.4	11.1	6.9 – 7.2
M6	7.9 / 9.8	12.0	8.0 – 8.4
M8	7.5 / 12.4	14.3	10.1 – 10.6
M10	12.0 / 16.0	18.0	13.0 – 13.5

All dimensions in mm.  
Pilot hole dimensions for reference purposes only.

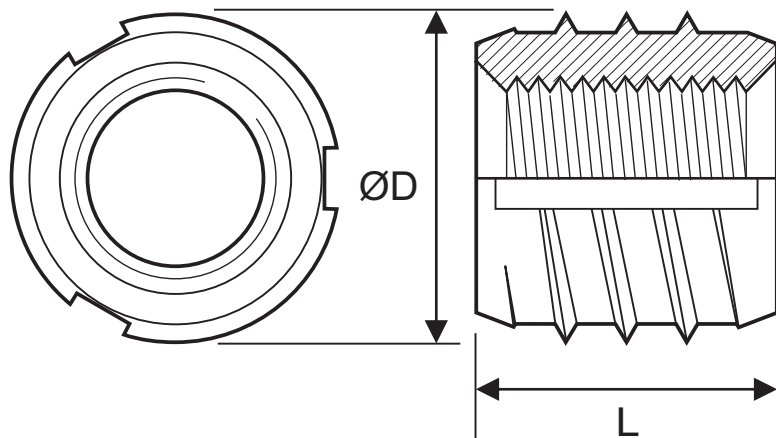


## Brass Threaded Inserts

Threaded inserts made from high quality CZ121/CW614N brass to give high tensile strength and excellent resistance to corrosion.

## Screw-in Inserts/Unheaded

Self tapping threaded brass inserts with three cutting flutes for cold installation into most grades of plastic and composite materials.



All dimensions in mm.  
Pilot hole dimensions for reference purposes only.

Thread Size	Available Lengths(L)	ØD	Pilot Hole
M2	4.0 / 4.8	3.5	3.1 – 3.3
M2.5	4.0 / 5.25 / 6.25	4.33	3.8 – 4.1
M3	4.0 / 5.25 / 6.25	4.73	4.1 – 4.4
M3.5	5.0 / 6.2 / 7.3	5.52	5.0 – 5.3
M4	5.6 / 7.1 / 8.4	6.31	5.8 – 6.1
M5	6.4 / 8.4 / 10.0	7.5	6.9 – 7.2
M6	7.9 / 9.8 / 12.0	8.69	8.0 – 8.4
M8	9.5 / 12.4	11.06	10.1 – 10.6
M10	12.0 / 16.0	13.95	13.0 – 13.5



## Brass Threaded Inserts

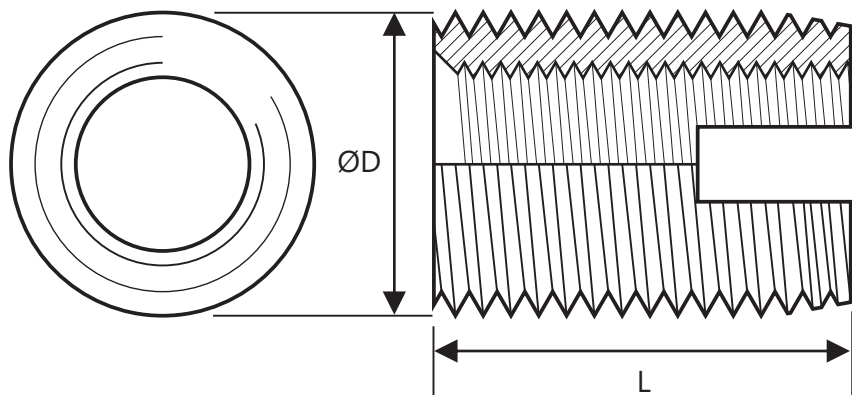
Threaded inserts made from high quality CZ121/CW614N brass to give high tensile strength and excellent resistance to corrosion.

## Self Threading

Brass self tapping threaded inserts with both internal and external thread, a wide cutting slot and tapered lead for tapping into harder materials including brittle plastics and metals.

Very high resistance to vibration and pull out.

Imperial thread sizes also available.



Internal Thread	Available Lengths (L)	External Thread (ØD)	Pilot Hole
M3	6*	M5 x 0.5	4.6–4.8
M4	8*	M6.5 x 0.75	5.8–6.2
M5	8 / 10**	M8 x 1.0	7.1–7.6
M6	8 / 10 / 12*	M9 x 1.0	8.1–8.6
M6	14**	M10 x 1.5	8.6–9.4
M8	12 / 15**	M12 x 1.5	10.6–11.4
M10	15 / 18*	M14 x 1.5	12.6–13.4
M10	18	M16 x 1.5	14.6 – 15.4

All dimensions in mm.  
Pilot hole dimensions for reference purposes only.

## Brass Threaded Inserts

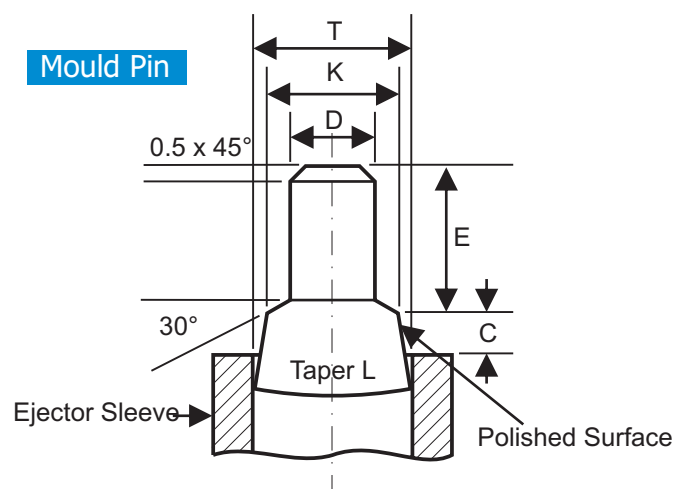
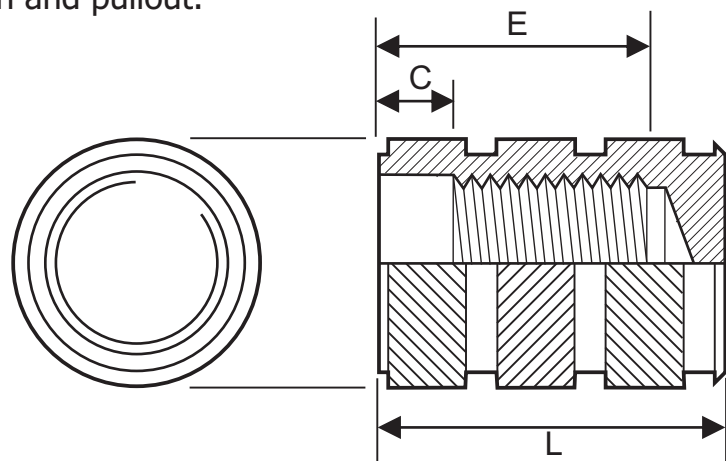
Threaded inserts made from high quality CZ121/CW614N brass to give high tensile strength and excellent resistance to corrosion.



## Mould-in Insert

Threaded inserts designed for moulding into plastic components during the manufacturing process.

Blind ended to prevent plastic entering the thread and with three opposing herringbone knurls to provide maximum resistance to torsion and pullout.



Thread Size	Length(L)	C	E
M3	7.3	1.3	4.6
M4	10.2	1.8	6.7
M5	11.2	2.0	7.4
M6	14.4	2.0	8.1
M8	16.5	2.3	11.1

Thread Size	C	D	E	ØK	ØL	ØT
M3	1.05	2.45	3.40	3.125	4.5	4.00
M4	1.50	3.25	5.00	4.425	4.5	5.40
M5	1.70	4.15	5.55	5.125	5.0	6.00
M6	1.80	4.95	6.15	6.600	5.5	8.00
M8	2.00	6.70	9.00	8.500	6.0	10.00

All dimensions in mm.

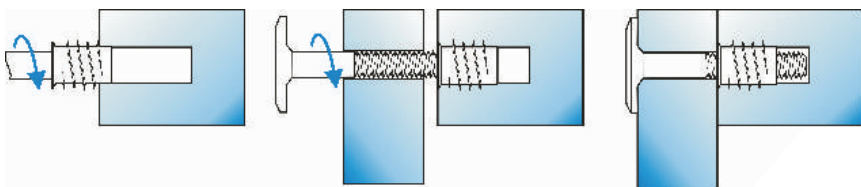
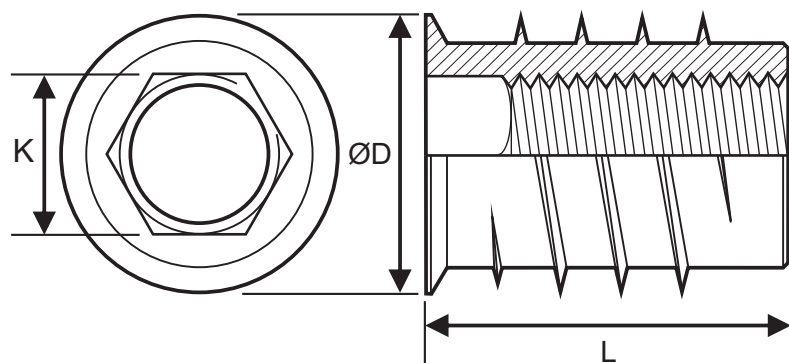
## Brass Threaded Inserts

Threaded inserts made from high quality CZ121/CW614N brass to give high tensile strength and excellent resistance to corrosion.

## Headed Hex-Drive

Screw-in threaded insert for wood with blade-like self tapping external thread designed to reduce installation forces into harder materials.

With sealing flange to limit insertion depth and tidy the pilot hole



Thread Size	Available Lengths (L)	ØD	K	Pilot Hole
M5	6 / 8	10.0	5	8.4 – 9.2
M6	6 / 7 / 8 / 12 / 15 / 18	12.0	6	10.0 – 10.8
M8	15 / 18	14.0	8	12.0 – 12.8

All dimensions in mm.  
Pilot hole dimensions for reference purposes only.

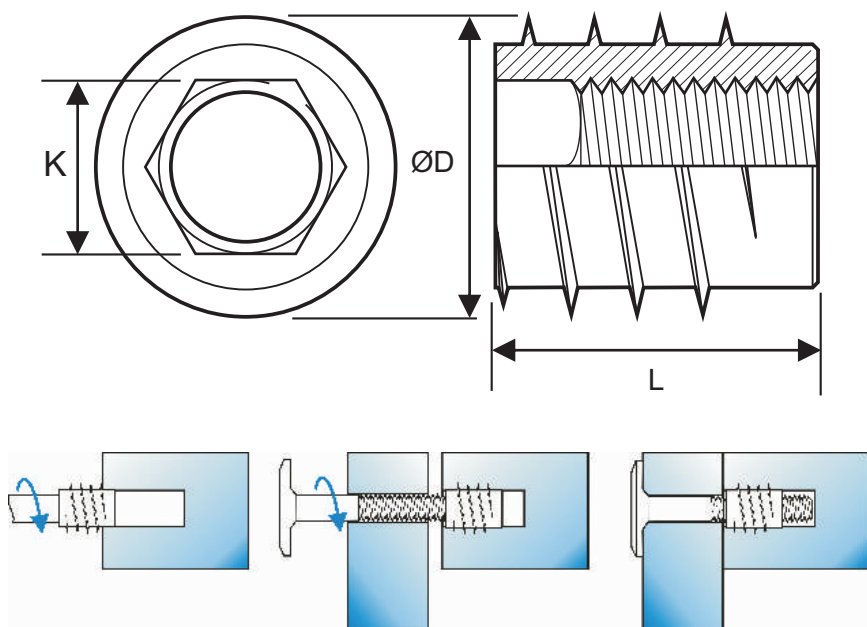
## Brass Threaded Inserts

Threaded inserts made from high quality CZ121/CW614N brass to give high tensile strength and excellent resistance to corrosion.

## Unheaded Hex-Drive

Screw-in threaded insert for wood, with blade-like self tapping external thread designed to reduce installation forces into harder materials.

Without sealing flange to allow bottoming out.



Thread Size	Length (L)	ØD	K	Pilot Hole
M4	10	8.0	4	6.6 – 7.2
M5	12	10.0	5	8.4 – 9.2
M6	15	12.0	6	10.0 – 10.8
M8	18	16.0	8	14.0 – 14.9
M10	25	18.5	10	16.2 – 17.2

All dimensions in mm.

Pilot hole dimensions for reference purposes only.

## Brass Threaded Inserts

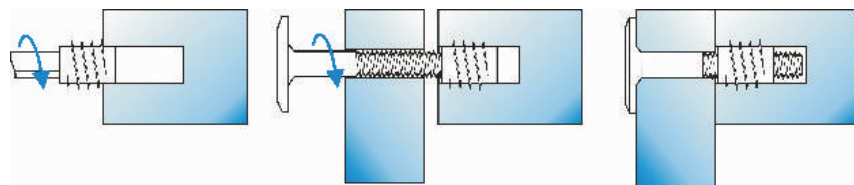
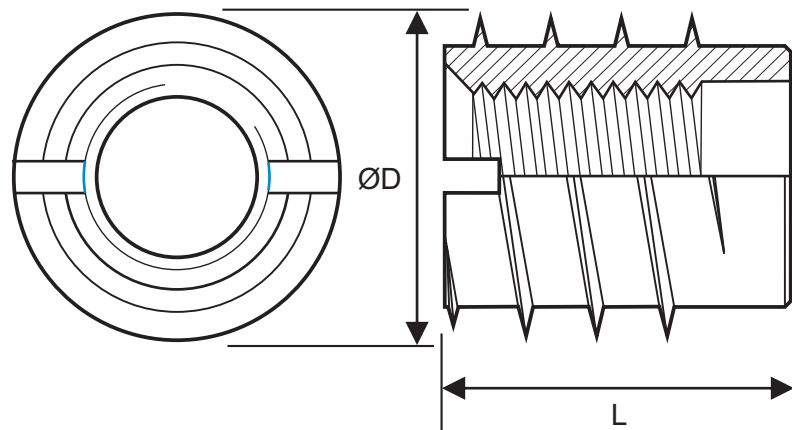
Threaded inserts made from high quality CZ121/CW614N brass to give high tensile strength and excellent resistance to corrosion.



## Slot-Drive

Screw-in threaded insert for wood, with blade-like self tapping external thread designed to reduce installation forces into harder materials.

With recess to accommodate excess wood shavings. Suited to automated installation.



\*With fully threaded internal length.

All dimensions in mm.

Pilot hole dimensions for reference purposes only.

Thread Size	Available Lengths (L)	ØD	Pilot Hole
M3	6* / 8	6	4.6–5.2
M4	8 / 10 / 12 / 15	6.5	5.3–5.8
M5	10 / 12 / 15 / 20	8.0	5.7–6.6
M6	10* / 12 / 15 / 18 / 20 / 25 / 30	10.0	7.6–8.5
M8	18*	13.0	10.4–11.4
M8	15* / 18*	14.0	11.4–12.4
M8	14* / 18 / 23 / 30	16.0	12.6 – 14.0
M10	15* / 20 / 25 / 30 / 40	18.5	15.1–16.5
M12	20* / 25 / 30 / 35	22.0	18.3–19.8
M16	25 / 30 / 35	25.0	21.3–22.8
M20	30	30.0	26.3–27.8

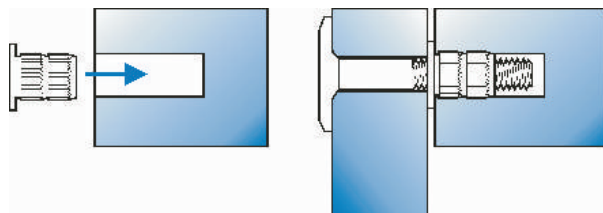
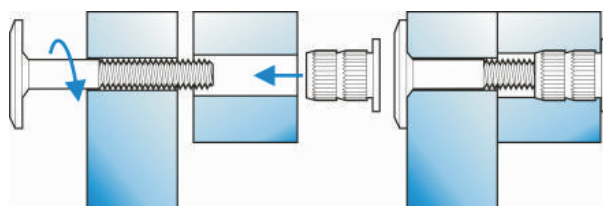
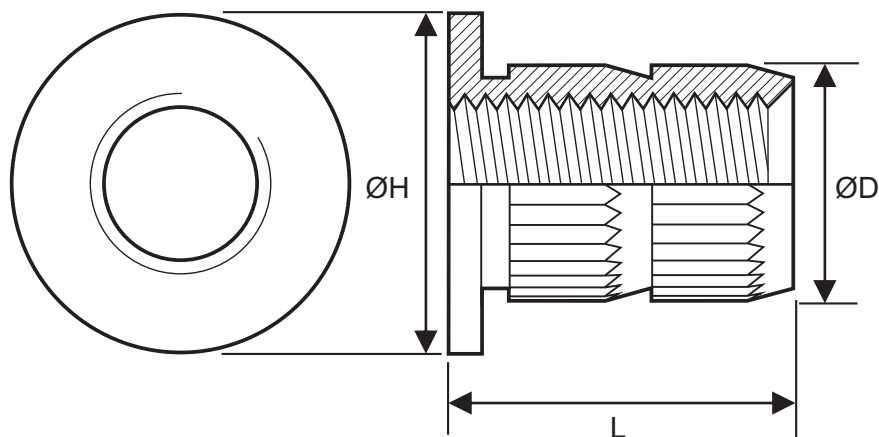
## Brass Threaded Inserts

Threaded inserts made from high quality CZ121/CW614N brass to give high tensile strength and excellent resistance to corrosion.

### Knock-in

Knock-in threaded insert with external knurl and groove design to provide excellent resistance to torsion and pull out.

Headed to tidy the pilot hole and ensure level installation.



Thread Size	Available Lengths (L)	ØH	ØD
M3	8.0	8.0	5.5
M4	8.0	8.0	5.5
M5	10.0	10.0	6.5
M6	7.7 / 12.0	12.0	8.5
M8	12.0	15.0	10.5
M10	12.0	18.0	12.5

.All dimensions in mm.

Pilot hole dimensions for reference purposes only.

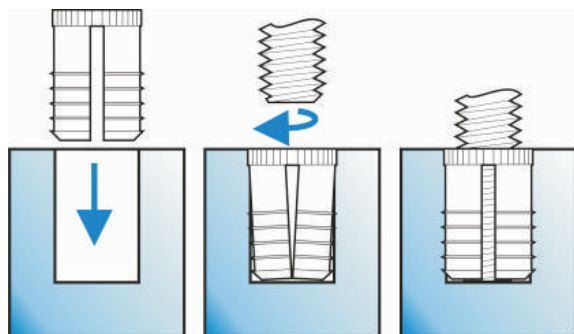
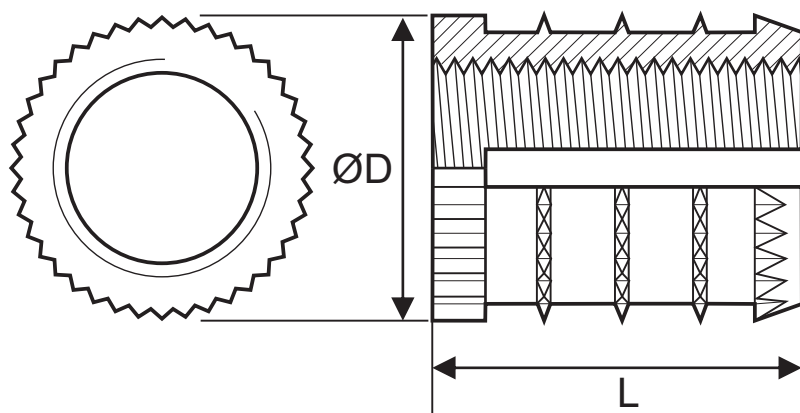
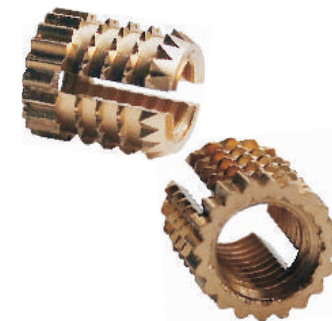
## Brass Threaded Inserts

Threaded inserts made from high quality CZ121/CW614N brass to give high tensile strength and excellent resistance to corrosion.

## Barbed Expansion Inserts

Threaded brass expansion inserts for applications in wood and composites.

Simple press in installation procedure requires no special equipment.



Thread Size	L	ØD	Pilot Hole Ø	Pilot Hole Depth
M4	8.0	6.0	5.0	9.0
M5	8.0	7.0	6.0	9.0
M6	9.0	9.5	8.0	11.0
M8	10.0	10.0	9.0	11.0
M10	13.0	12.0	11.0	14.0

All dimensions in mm.  
Pilot hole dimensions for reference purposes only.



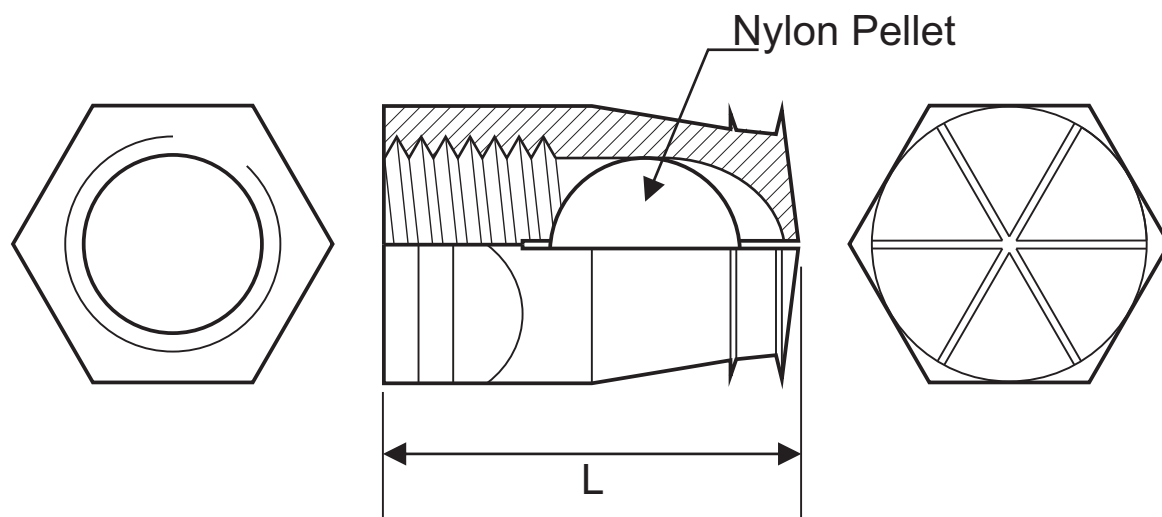
## Brass Threaded Inserts

Threaded inserts made from high quality CZ121/CW614N brass to give high tensile strength and excellent resistance to corrosion.

## Spreading Insert

M6 threaded brass spreading inserts with nylon pellet to ensure even loading on the expanding legs.

Simple press fit installation.



Thread Size	Available Lengths (L)	Pilot Hole
M6	9 / 12	8.0

All dimensions in mm.  
Pilot hole dimensions for reference purposes only.

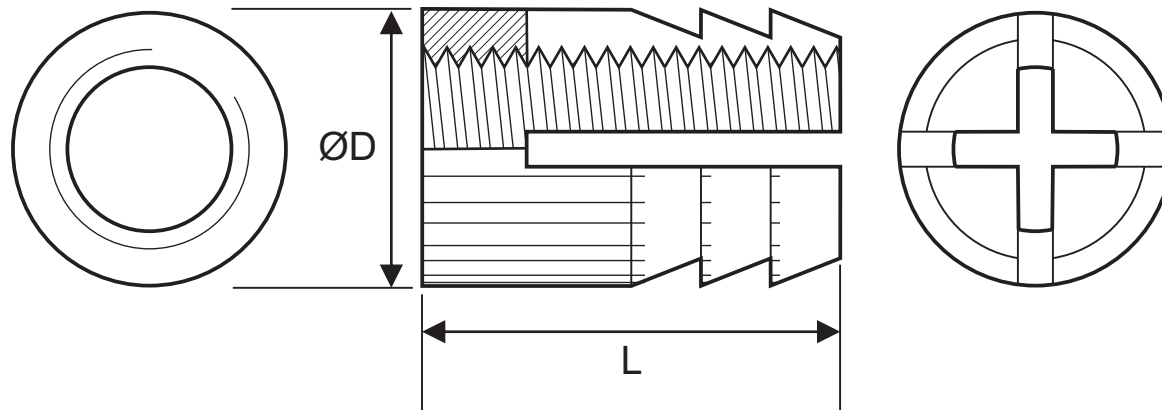
## Brass Threaded Inserts

Threaded inserts made from high quality CZ121/CW614N brass to give high tensile strength and excellent resistance to corrosion.

## Spreading Dowel

M4 threaded brass spreading dowel for 5mm hole.

Press fit installation..



Thread Size	Available Lengths (L)	ØD
M4	8	5.3

All dimensions in mm.  
Pilot hole dimensions for reference purposes only.

## Furniture Connectors

Threaded components for applications in furniture assembly.

### Flathead Connector Bolts

Steel connector bolts with decorative flathead and hex drive.

Available in zinc plate, yellow zinc plate, nickel plate, black, antique bronze and stainless steel grade 1.4301.



Zinc Plate



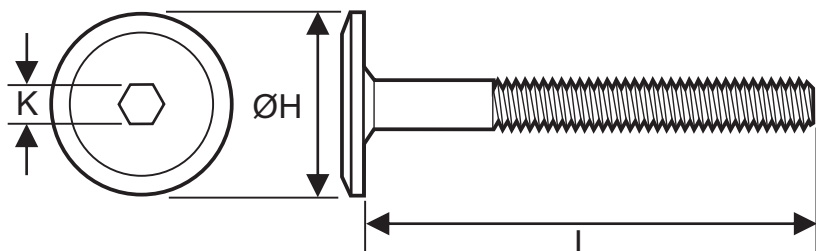
Stainless Steel



Black



Antique Bronze



Thread Size	Available Lengths (L)	ØH	K
M5	15 / 25 / 30 / 40	8.0	4
M6**	12 / 16 / 20 / 25 / 30	14.0	4
M6	10 / 12 / 16 / 20 / 25 / 30 / 35 / 40 / 40 50 / 55 / 60 / 65 / 70 / 75 / 80 / 90 100 / 110 / 120	15.0	4
M8	16* / 25* / 40* / 45* / 50*	17.0	5
M10	55 / 60 / 70 / 80 / 100 / 120	25.0	6

M10 bolt are grade 8.8 steel all others are grade 4.8 steel.

\*Available in stainless steel grade 1.4301

\*\*Sizes for M6 bolts in Stainless steel grade 1.4301

All dimensions in mm.

## Furniture Connectors

Threaded components for applications in furniture assembly.

### Mushroomhead Connector Bolts

Connector bolt with decorative domed head and hex drive.

Available in zinc plate, yellow zinc plate, nickel plate, black, antique bronze and stainless steel grade 1.4301.



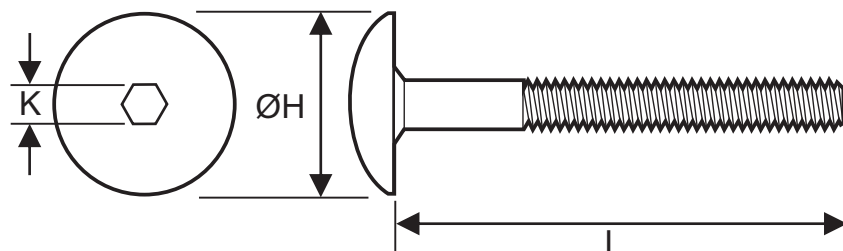
Zinc Plate



Antique Bronze



Stainless Steel



Thread Size	Available Lengths (L)	ØH	K
M4	15 / 30 / 45	8.0	4
M6	10 / 12* / 15 / 16* / 20* / 25* / 30* / 35* / 40* / 45* / 50* / 55 / 60* / 65 / 70* / 75 / 80* / 90* / 100* / 110 / 120*	15.0	4
M8	16 / 20* / 25 / 30 / 35* / 40* / 45* / 50 / 55 / 60 / 65 / 70 / 75 / 80 / 90	25.0	5

\*Available in stainless steel grade 1.4301  
All dimensions in mm.

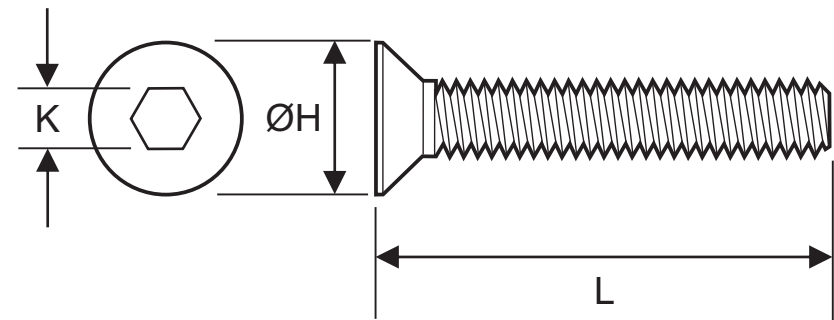
## Furniture Connectors

Threaded components for applications in furniture assembly.

### Countersunk Connector Bolts

Grade 4.8 and stainless steel connector bolts/furniture screws with hex drive and countersunk head.

Available zinc plated or black coated.



Thread Size	Available Lengths (L)	ØH	K
M6	15 / 20 / 25 / 30* / 35 / 40* / 45 / 50* / 60 / 65 / 70 / 80 / 90 / 100 / 110 / 120	15.0	4
M8	16 / 20 / 25 / 30 / 35 / 40 / 45 / 50 / 60 / 70 / 80 / 90	25.0	5

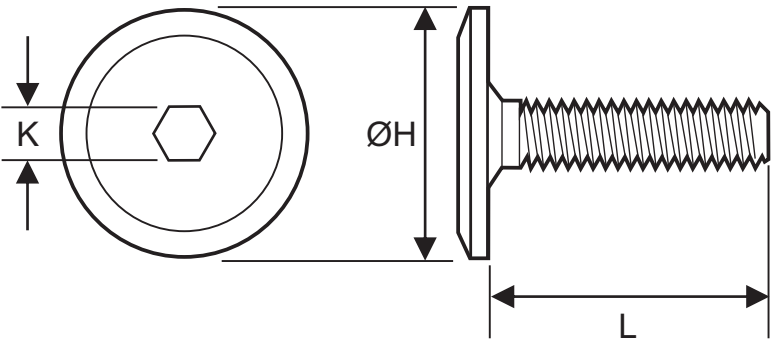
\*Available in stainless steel grade 1.4301  
All dimensions in mm.

# Furniture Connectors

Threaded components for applications in furniture assembly.

## Brass Bolts

Brass connector bolts/furniture screws with decorative flathead and hex drive.



Thread Size	Available Lengths (L)	ØH	K
M6	10 / 16 / 20 / 25 / 30	15.0	4

All dimensions in mm.

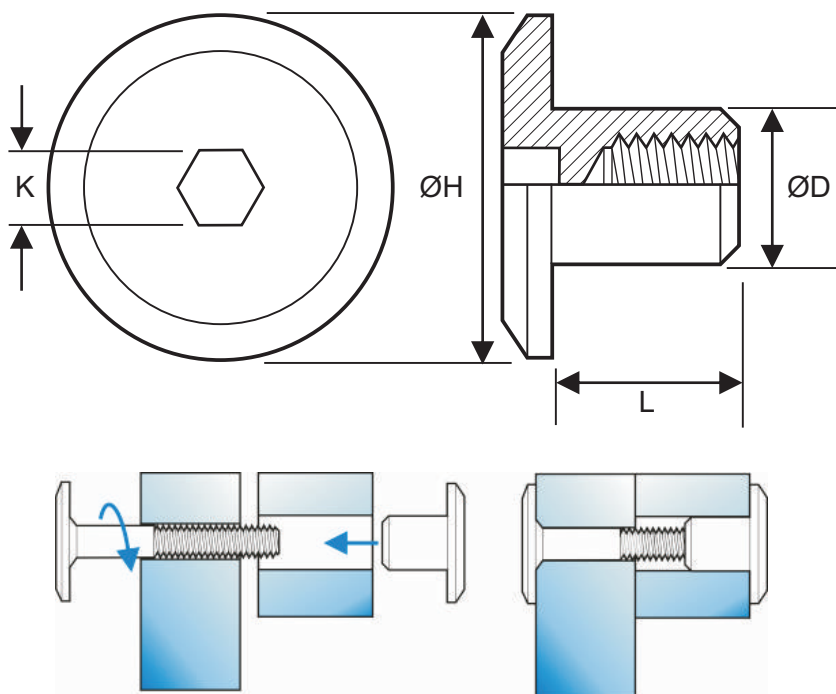
## Furniture Connectors

Threaded components for applications in furniture assembly.

### Flathead Connector Caps(Closed)

Blind ended steel and stainless steel connector caps with decorative flathead and hex-drive.

Available in zinc plate, yellow zinc plate, nickel plate, black, and antique bronze.



\*Available in stainless steel grade 1.4301.

\*\*Available in brass.

\*\*\*Available in stainless steel grade 1.4301 and brass.

All dimensions in mm

Thread Size	Available Lengths (L)	ØH	ØD	K
M5	12 / 15	15.0	8.0	4
M6	12 / 15 / 18**	15.0	9.0	4
M6	12	15.0	8.0	5
M6	10** / 12*** / 15 / 18*	15.0	9.0	5
M6	16** / 20	19.0	9.0	5
M8	11.5	17.0	10.0	5
M8	25	17.0	12.0	5
M8	16	19.0	10.0	5
M10	18	22.5	13.0	6



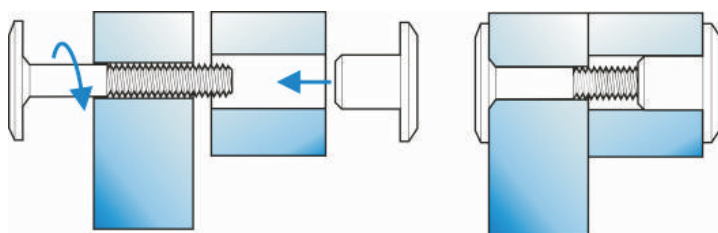
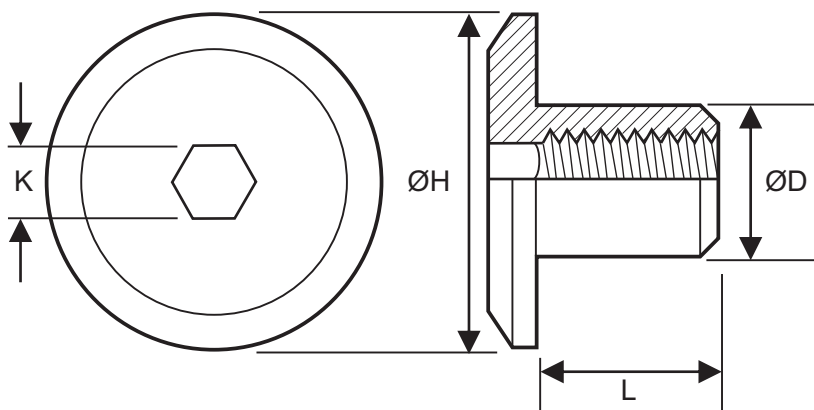
## Furniture Connectors

Threaded components for applications in furniture assembly.

### Flathead Connector Caps(Open)

Through bore brass, stainless steel and steel connector caps with decorative flathead and hex-drive.

Available in zinc plate, nickel plate, black and antique bronze.



All sizes available in brass unless otherwise indicated.

\*Only available in steel.

\*\*Available in stainless steel grade 1.4305.

\*\*\*Only available in stainless steel grade 1.4305.

All dimensions in mm.



Thread Size	Available Lengths (L)	ØH	ØD	K
M5	9*	15.0	9.0	4
M6	9*	12.0	8.0	4
M6	9	13.0	8.0	5
M6	10**	15.0	9.0	5
M6	10 / 15**	20.0	9.0	5
M8	11.5	17.0	10.0	5
M8	10 / 15***	20.0	10.0	5
M8	10	25.0	14.0	5
M8	20	25.0	10.0	5
M8	18	30.0	14.0	5
M10	10	25.0	14.0	5
M10	18***	25.0	14.0	6
M10	18	30.0	14.0	5

## Furniture Connectors

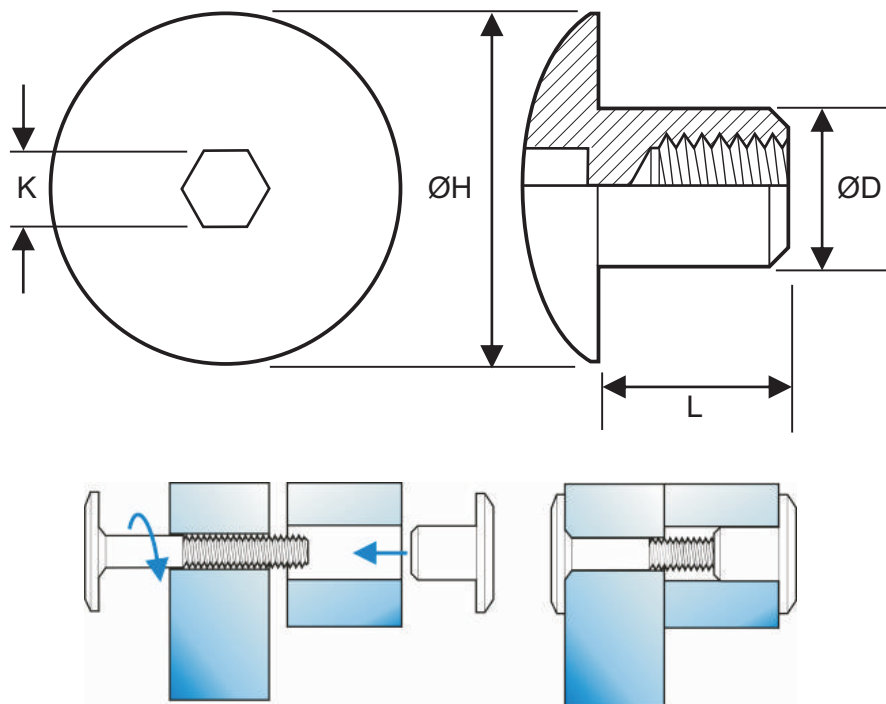
Threaded components for applications in furniture assembly.

### Mushroomhead Connector Caps (Closed)

Blind ended steel connector caps with decorative domed head and hex drive.

Available in zinc plate, yellow zinc plate, nickel plate, black, antique bronze and stainless steel.

\*Available in stainless steel grade 1.4301.  
All dimensions in mm.



Thread Size	Available Lengths (L)	ØH	ØD	K
M5	13	12.0	6.5	4
M6	12	15.0	8.0	4
M6	12 / 15 / 18	15.0	9.0	4
M6	10	13.0	8.0	5
M6	15	15.0	8.0	5
M6	12* / 15 / 18*	15.0	9.0	5
M6	16 / 20	19.0	9.0	5
M8	14 / 16	20.0	10.0	5
M8	20	20.0	10.0	6
M10	13	20.0	13.0	5

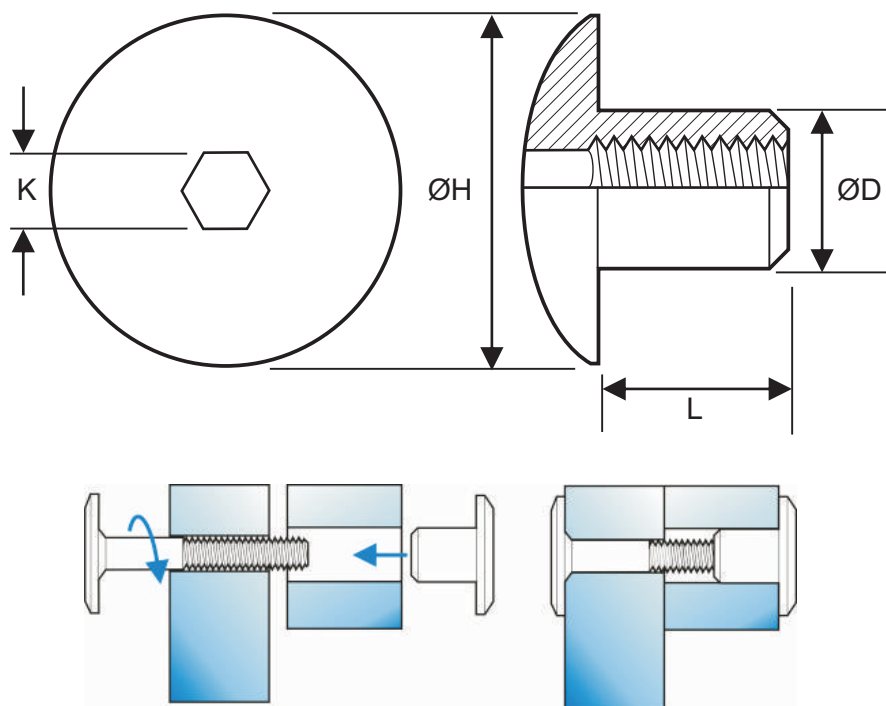
## Furniture Connectors

Threaded components for applications in furniture assembly.

### Mushroomhead Connector Caps (Open)

Brass and stainless steel through-bore connector caps with decorative domed head and hex drive.

Available in plain brass, nickel plate and antique bronze.



\*Available in stainless steel grade 1.4305.

\*\*Only available in stainless steel grade 1.4305.

\*\*\*Only available in plain brass.

All dimensions in mm.

Thread Size	Available Lengths (L)	ØH	ØD	K
M6	9	13.0	8.0	5
M6	10*	15.0	9.0	5
M6	10 / 15*	20.0	9.0	5
M8	11.5	17.0	10.0	5
M8	10 / 15**	20.0	10.0	5
M8	18	30.0	14.0	5
M10	10	25.0	14.0	5
M10	18	30.0	14.0	5
M10	18**	25.0	14.0	5
M12	18***	30.0	16.0	8

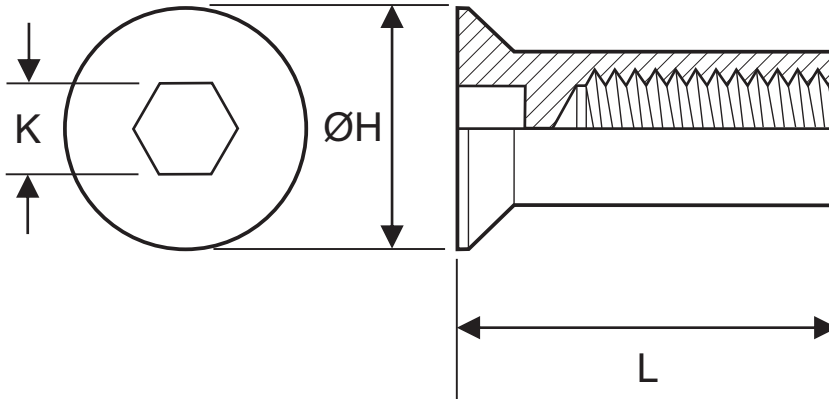
## Furniture Connectors

Threaded components for applications in furniture assembly.

### Countersunk Connector Caps

Grade 4.8 steel connector caps with hex drive and countersunk head.

Available zinc plated or black coated.



Thread Size	Length (L)	ØH	K
M6	20	12.0	4

All dimensions in mm.

## Furniture Connectors

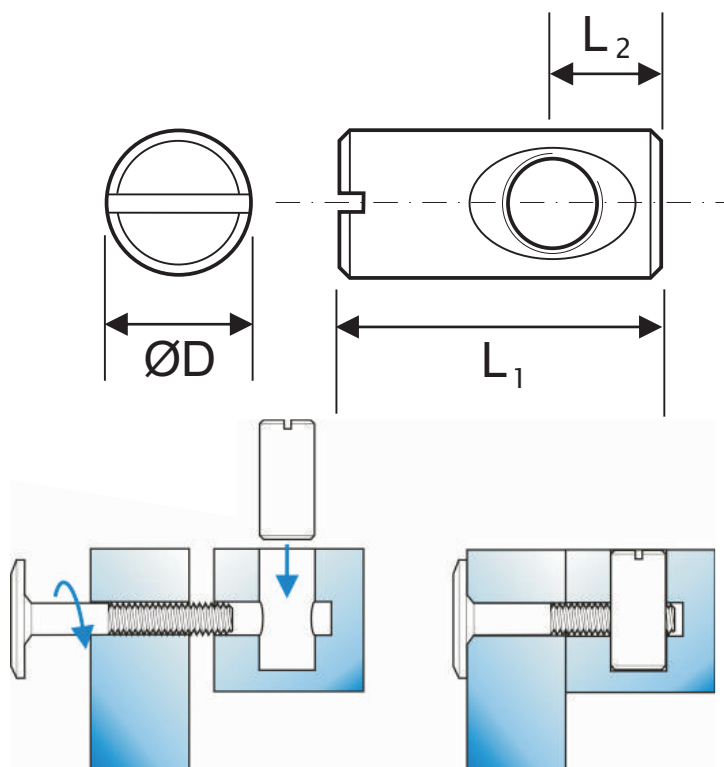
Threaded components for applications in furniture assembly.

### Cross Dowels

Zinc plated steel and stainless steel cross dowels for forming strong right angled connections subject to high pull out forces.



\*Available in stainless steel grade 1.4305.  
All dimensions in mm.



Thread Size	Available Lengths (L1)	L2	ØD
M4	12 / 16 / 20	Centre	8.0
M5	12 / 16 / 20	Centre	8.0
M6	12* / 14 / 16 / 18 / 19 / 20* / 22 / 25 / 30 / 35 / 40 / 45	Centre	10.0
M8	12 / 14 / 16 / 18 / 20 / 22 / 25 / 30 / 35 / 40 / 45 / 50 / 60	Centre	12.0
M10	20 / 25 / 30 / 40 / 50	Centre	12.0
M6	12 / 12.5 / 13 / 14 / 16	5.0	10.0
M6	14 / 15 / 16* / 17 / 18	6.0	10.0
M6	25 / 30 / 35	10.0	10.0
M6	12	5.0	12.0
M6	16	6.0	12.0
M6	12	5.0	16.0

## Furniture Connectors

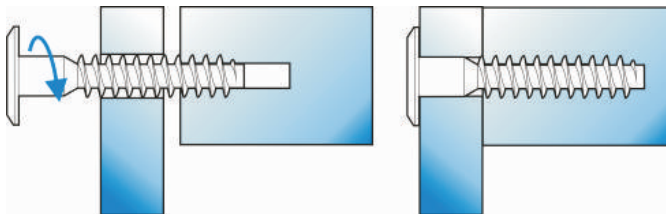
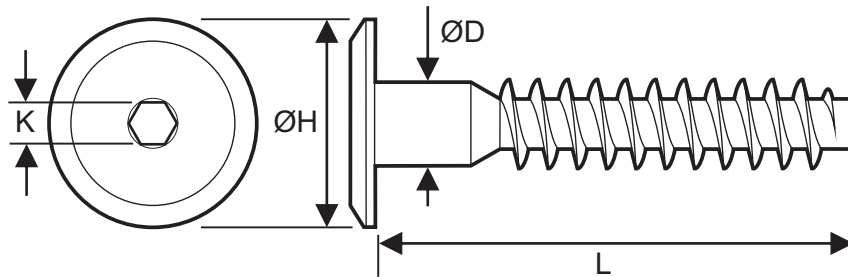
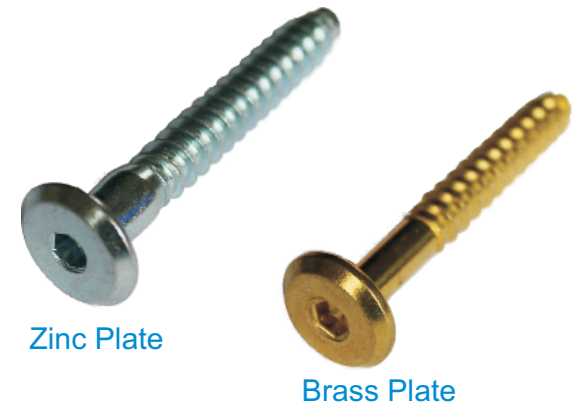
Threaded components for applications in furniture assembly.

### Connector Screws

Self tapping combination screw with decorative flat head and hex drive.

Available in zinc plate, nickel plate, brass plate and antique bronze.

This one piece connector eliminates the need for nut and bolt alignment.



Available Lengths (L)	ØH	ØD	K
50 / 60 / 70 / 90 / 110	15.0	6.3	4
30 / 40 / 50 / 60 / 70	15.0	7.0	4

All dimensions in mm.

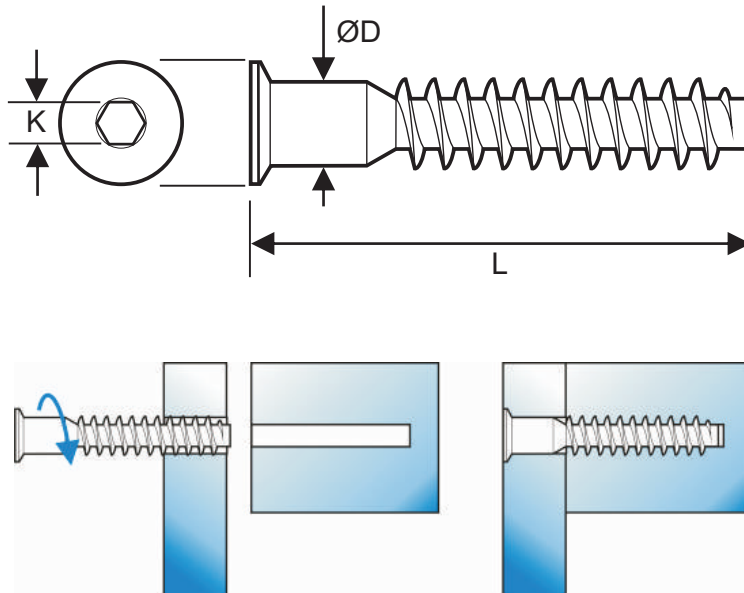
## Furniture Connectors

Threaded components for applications in furniture assembly.

### Conformat Screws

Zinc plated, self tapping combination screw with hex drive.

This one piece connector eliminates the need for nut and bolt alignment.



Available Lengths (L)	ØD	K
40 / 50	5.0	3
50 / 60 / 70	6.3	4
30 / 35 / 40 / 50 / 60 / 70	7.0	4

All dimensions in mm.

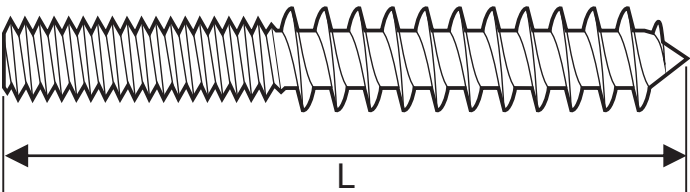


## Furniture Connectors

Threaded components for applications in furniture assembly.

### Wood to Metal Dowels

Zinc plated steel and stainless steel wood to metal dowels (hanger bolts) with metric thread and rolled wood screw thread.



Thread Size	Available Lengths (L)
M3	15 / 20
M4	15 / 20 / 25 / 30 / 40*
M5	30 / 35 / 40 / 45 / 50 / 60
M6	30 / 40 / 50* / 60 / 70 / 80 / 90
M8	50 / 60* / 70 / 80 / 90 / 100 / 110 / 120
M10	40 / 50 / 60 / 70 / 80 / 90 / 100 / 110 / 120 / 130 / 140

\*Available in stainless steel grade 1.4301.  
All dimensions in mm.

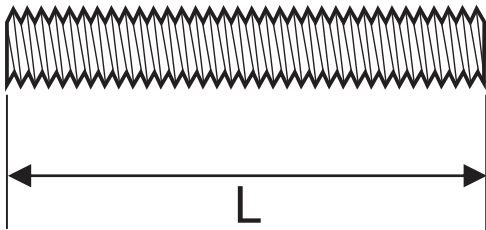
## Furniture Connectors

Threaded components for applications in furniture assembly.

## Steel Studding

Unchamfered zinc plated steel and stainless threaded bar/studding.

Stock sizes are listed below, please contact us for bespoke thread sizes and lengths.



Thread Size	Available Lengths (L)
M6	25 / 30* / 35 / 45* / 50 / 60 / 70 / 80 / 90 / 100 / 110 / 120 / 130
M8	30 / 40 / 50 / 60 / 70 / 80 / 90 / 100 / 110
M10	40 / 50 / 60 / 70 / 80 / 90 / 100 / 110

\*Available in stainless steel grade 1.4301.  
All dimensions in mm.

## Notes:

## Notes: